



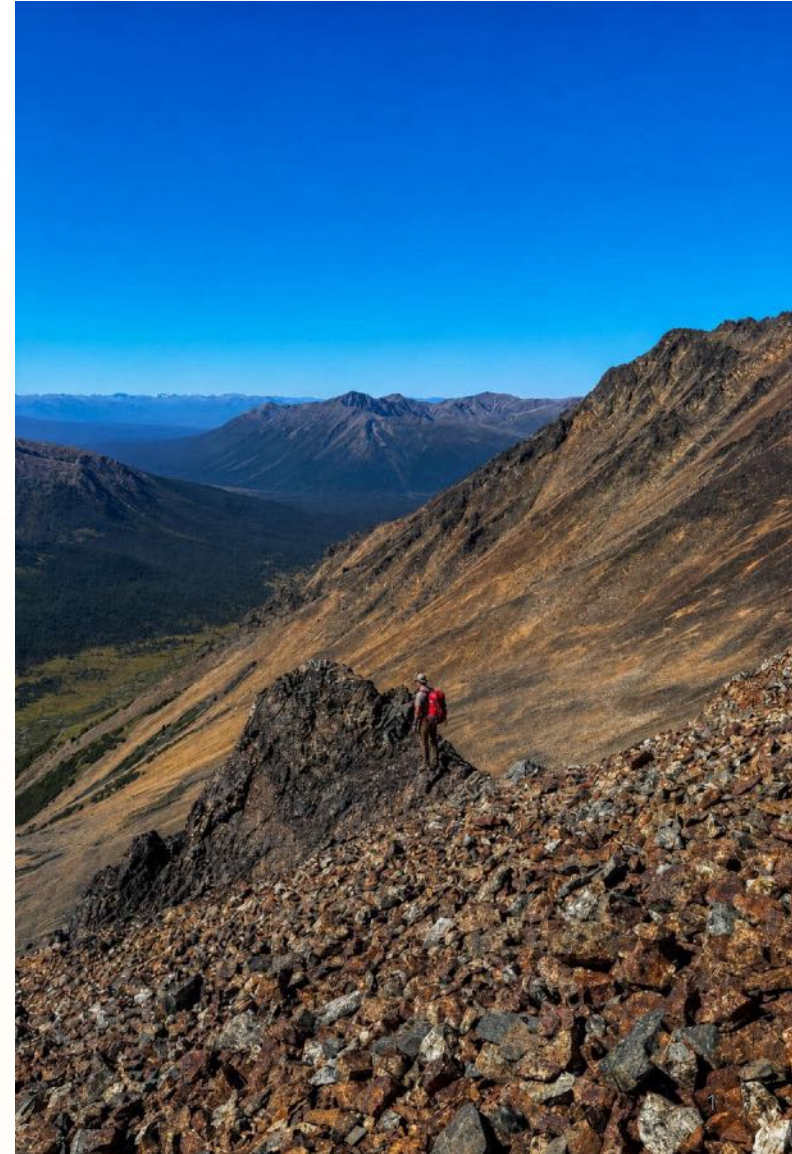
## Corporate Presentation Q2 2026

Discovery-driven shareholder value creation through exploration of precious and critical metal projects in British Columbia.

[OTCQB: PRRSF](#)

[CSE: PRR](#)

[CSE: PRR](#) | [OTC: PRRSF](#) | [FRA: OED](#)





## Corporate Overview

### Our Mission

Strategic shareholder value creation through exploration discovery on precious and critical metal projects in British Columbia.

Sole focus: the discovery of **copper-gold porphyry deposits** in British Columbia.

### Our Approach

Differentiated strategy utilizing a unique combination of best-in-class geoscience and fit-for-purpose execution — efficiently delivering results without unnecessary complexity.

- Listed on the **CSE under PRR**
- Listed on the **OTCQB under PRRSF**
- [prospectridgeresources.com](http://prospectridgeresources.com)

# Forward Looking Information



⚠ This presentation contains forward-looking statements involving risks and uncertainties. These statements address future events and conditions and, as such, involve inherent risk and uncertainties. Actual results could be significantly different from those projected.

Risks and uncertainties of the Company's business are discussed in the Management Discussion and Analysis of the Company's Annual and Quarterly Reports, available both on the Company's website at [www.prospectridgeresources.com](http://www.prospectridgeresources.com) and at [www.SEDAR.com](http://www.SEDAR.com).

ⓘ Some referenced mineral resources and nearby project information from adjacent properties are sourced from third-party public disclosure and have not been independently verified by the Qualified Person. Results from adjacent properties described are not necessarily indicative of potential or of quantities or grades of mineralization on the Prospect Ridge Resources properties.

All technical disclosure in this presentation has been reviewed and approved by **Ron Voordouw, Ph.D., P.Geo.**, Director of Geoscience at Equity Exploration Consultants Ltd., a consultant to the Company and a qualified person as defined by National Instrument 43-101.

## Management Team & Board

The team combines strong technical, exploration, capital markets, and mine development experience. Founders and executives have backgrounds with **Fortuna Silver**, **Niogold**, **First Mining Gold**, and **Goldrush Resources**.



Len Brownlie, Ph.D.  
*President, CEO & Director*



- 40 years as director/officer of public exploration companies
- Former CEO of Goldrush Resources Ltd.
- Goldrush discovered the Ronguen gold deposit in Burkina Faso before merging with First Mining Gold in 2016

Michael Iverson  
*Chairman & Director*



- 30 years of capital markets and executive experience in mining
- Co-founder of Fortuna Silver Mines
- Founder of Niogold Mineral Corp.
- Director of Volcanic Gold Mines

Pat Donnelly, B.Sc., MBA  
*Director*



- 30 years in exploration, corporate development, capital markets, and investor relations
- Co-founder of First Mining Gold
- Former mining analyst and executive

Bennett Liu, CFA, CPA  
*CFO*



Financial reporting, regulatory compliance, and treasury specialist for Canadian public companies.

Seema Sharma, CPA  
*Land Manager*



20 years of experience in accounting in public practice and private industries.

Jacques Brunelle  
*Director*



Canadian businessman with 30+ years in the North American mining industry including senior executive roles.

Toby Lim, Solicitor  
*Director*



Corporate and securities lawyer for 25+ years. Co-founder of Vantage Law.

# Advisors & Project Team



"There is no substitute for experience."

Technical depth and local regional knowledge set Prospect Ridge apart.

At the executive and board levels the company is supported by a strong group of advisors.



Henry Awmack, P.Eng. (Ret.)

Mining engineer and co-founder of Equity Exploration.



Mark Baknes, MSc., P.Geo.

Senior exploration geological consultant.



David Caulfield, P.Geo. (Ret.)

Geologist, mining executive, and co-founder of Equity Exploration.



John McVey, P.Eng.

Former CEO of Procon Mining.



Michael Michaud, MSc., P.Geo.

President and CEO of RPX Gold. Formerly with Wesdome and IAMGOLD.



Phil Smerchanski, M.Econ.Geol., P.Geo.

Senior Technical Advisor. Principal of Accretive Metals Advisory. Formerly with Anglo American, INCO, and Oxygen Capital.

Prospect Ridge's projects are also supported by **Equity Exploration Consultants**, one of Canada's most experienced exploration project management consultancies, with deep operational knowledge in BC and strong technical depth with BC porphyries.

# Building Credibility as a Top BC Explorer



The company transformed significantly in 2025 through acquisitions, financing, technical recruitment, and initial drilling — building a track record that investors can trust.



📌 Sole focus: discovery of copper-gold porphyry deposits in British Columbia by applying a unique combination of best-in-class geoscience and fit-for-purpose execution.

## Why Target Shallowly Buried Copper-Gold Porphyry Deposits?

### Predictable Zonation

Copper-gold porphyry systems display predictable mineralogical zonation that defines vectors toward the most highly mineralized parts of a mineral system.

### Integrated Datasets

Geological, geochemical, and geophysical datasets combined with experience improve targeting outcomes and reduce investment risk.

### Technology & Metal Prices

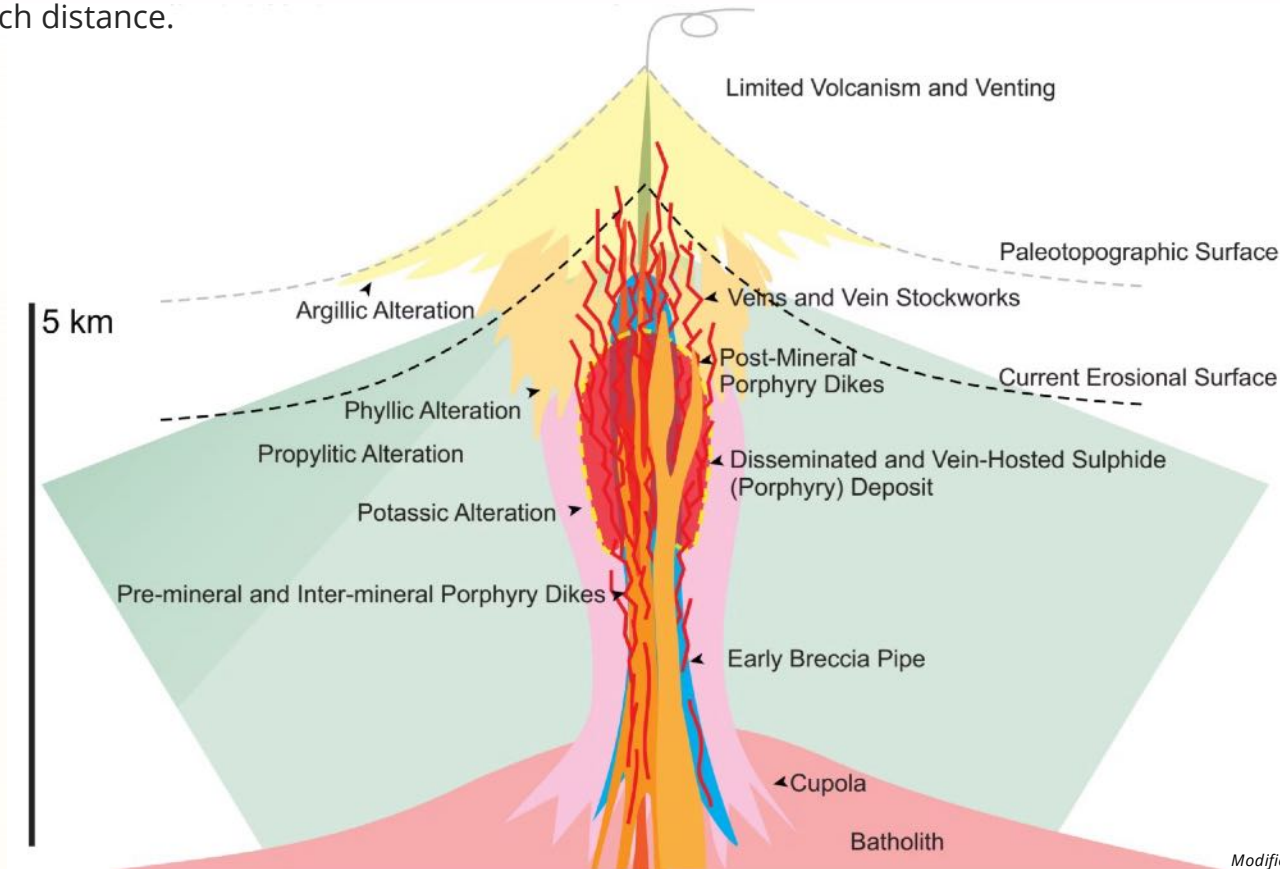
Advances in technology and stronger metal prices have increased the viability of discovering shallow concealed porphyry deposits.

### Major Producer Interest

These systems provide a strong pathway to significant discovery and value creation — the targets that major mining producers value. Increased investment by the majors into BC is evident.

## Cross Section of a Typical Porphyry Deposit

Well understood models for porphyry deposit formation provide clear zonation and exploration vectoring and allow for identification of mineralized system footprints at a larger search distance.



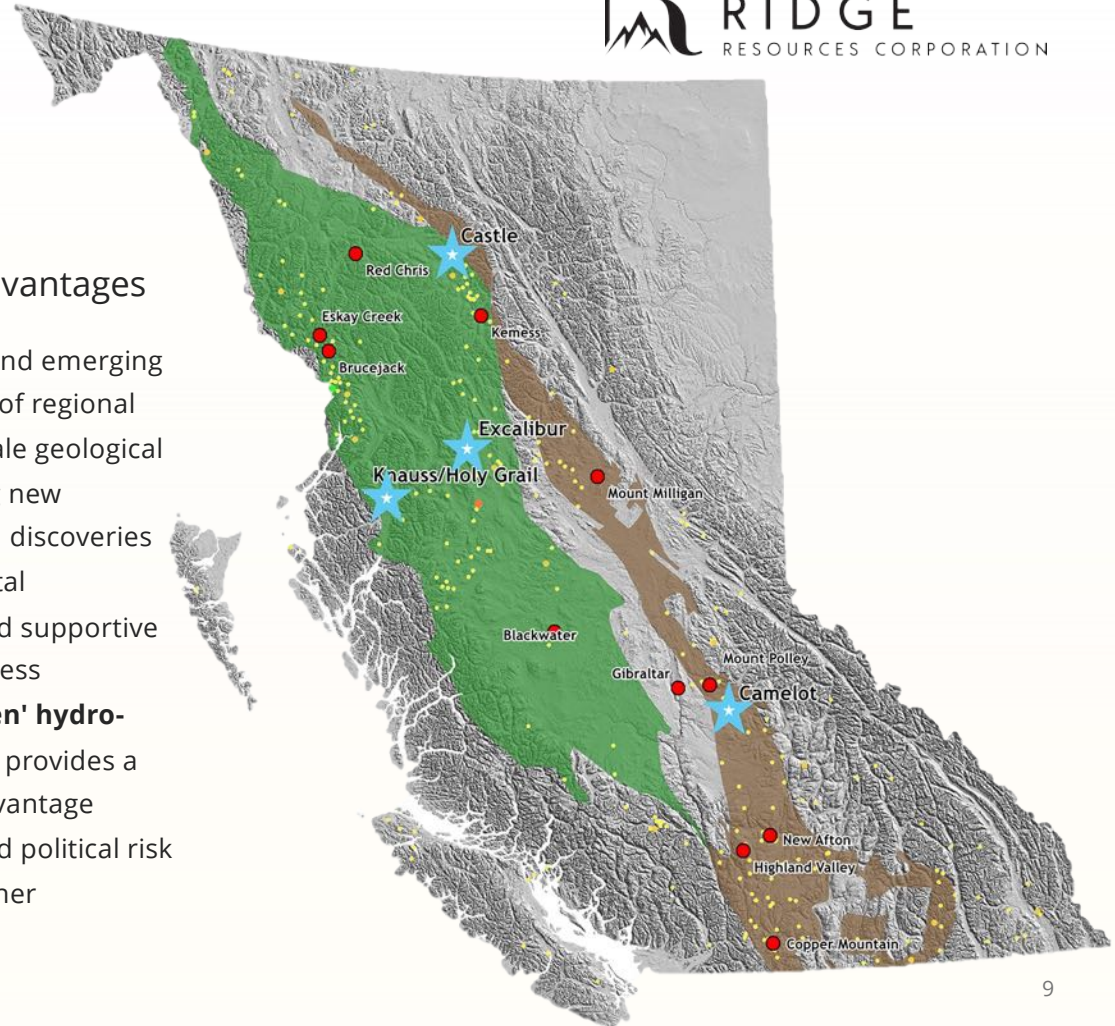
# BC's Well-Endowed Copper & Gold Terranes

## Strategic Portfolio

The company has assembled a strategic portfolio of copper and gold projects within the **Stikine (green)** and **Quesnel (brown)** terranes, host to some of Canada's most prolific copper and gold mining districts.

## Competitive Advantages

- New research and emerging understanding of regional and deposit-scale geological controls driving new investment and discoveries
- Substantial metal endowment and supportive regulatory process
- Abundant **'green' hydro-electric power** provides a competitive advantage
- Lower perceived political risk in BC versus other jurisdictions



# Project Pipeline



Four active projects in 2026 — all targets hosted within or adjacent to major regional fault systems where long-lived, arc-transverse faults provide the optimal structural setting for major porphyry deposits.



## Holy Grail & Knauss Creek

Polymetallic vein targets near Terrace. Previously tested in 2024–2025. Desktop review of past work and residual potential planned for 2026.



## Castle

Copper-gold porphyry lithocap target in the northern Toodoggone district. East of Newmont's Red Chris mine. Geological modelling planned for 2026 to support 2027 drill targeting.



## Excalibur

Babine Belt copper-gold porphyry target ~60 km north of former Bell and Granisle mines. Road accessible from Smithers. Drill testing planned for Q2/Q3 2026.



## Camelot

Copper-gold porphyry target 33 km south of Mount Polley mine. Initial drilling delivered positive results. Geochemical and alteration vectors will be used to target higher-grade zones in the Q3 2026 drill program.

☐ All targets defined by +kilometer-scale alteration footprints, confirmed mineralization, and porphyry intrusions with favorable host rocks.



## Holy Grail & Knauss Creek Overview

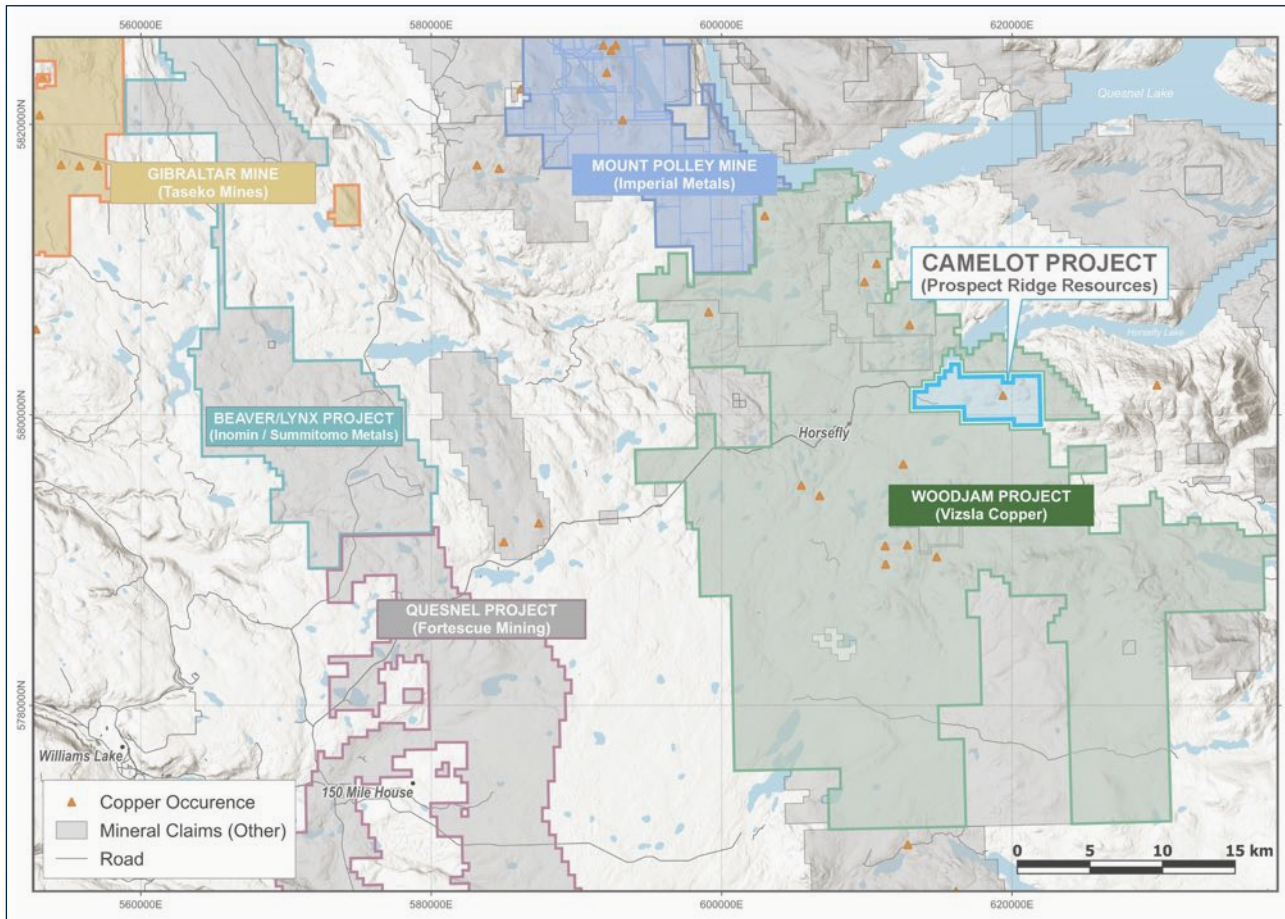
### Location & Setting

- Situated in the **Golden Triangle**, north and north-northeast of Terrace
- Polymetallic vein targets amongst historical mining and placer gold production areas
- Road access and nearby infrastructure
- Permitted for additional drilling

### Key Highlights

- High copper, gold, zinc, and silver grades returned from surface sampling
- Claims in good standing for **7 years**
- Review of broader exploration upside planned for 2026

# Camelot Overview



## Project Details

- 2,645 hectares in the **southern Quesnel Belt**
- Earning into 100%
- Situated 65 kilometres east of Williams Lake

## 2026 Plans

- Strong road access and infrastructure
- Five-year drilling permit application in process
- Magnetics and drilling planned for 2026

# Camelot – Discovery Vectors

Camelot lies within a proven mineralized district at the intersection of major terrane-scale structures, with magnetic signatures comparable to known mineralized systems

## Structural Setting

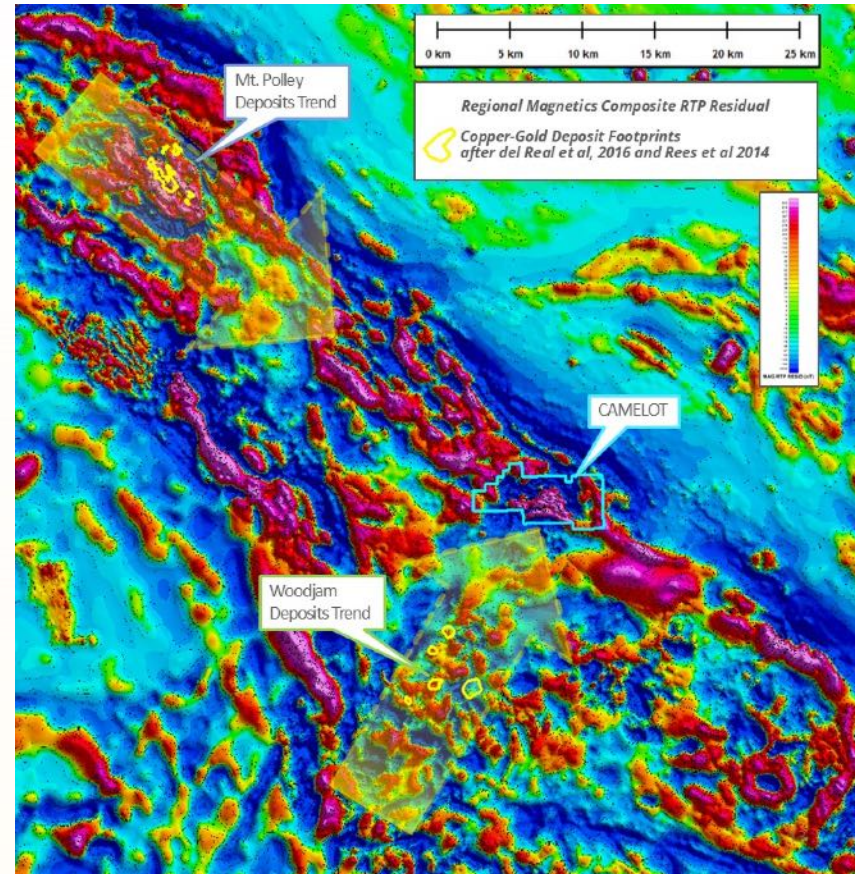
- Regionally, project lies at intersection of terrane-scale northwest-trending fault system and prominent northeast-trending structural corridor
- Comparable structural setting controls mineralized porphyry systems at **Woodjam and Polley**
- Target defined by coincident IP chargeability, magnetics, and soil anomalies beneath shallow till cover

## 2025 Maiden Drill Program

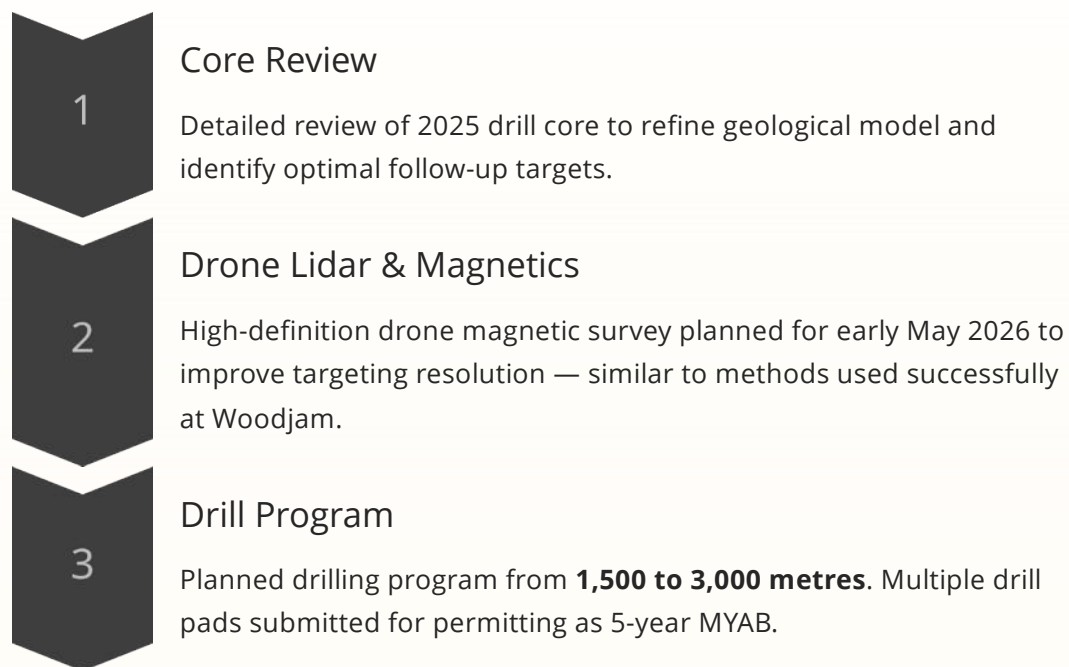
- 2,034 metres** completed in 10 shallow drill holes
- Disseminated chalcopyrite mineralization with pyrite dominant over chalcopyrite
- Most holes ending in mineralization
- Moderate epidote, potassium feldspar, and albite alteration, as well as quartz-carbonate veining
- Results support vectoring towards stronger mineralized zones in the system

Integrated geophysical and geochemical datasets confirm Camelot as a high-priority Cu-Au porphyry target with vectors that can target towards stronger mineralization.

CSE: PRR | OTC: PRRSF | FRA: OED



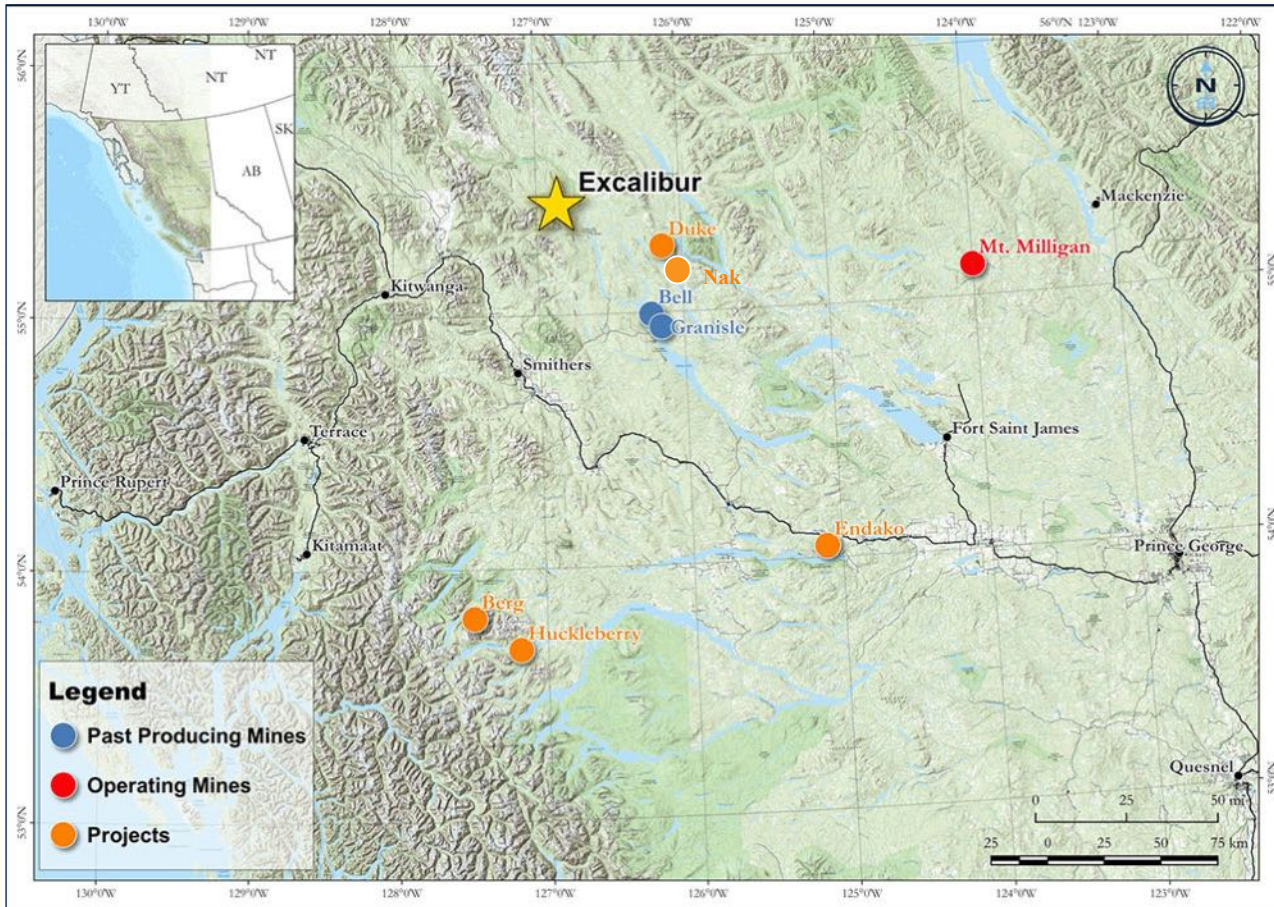
# Camelot – 2026 Next Steps



CSE: PRR | OTC: PRRSF | FRA: OED



# Excalibur Overview



## Regional Context

Located approximately **60 km north** of the former Bell and Granisle mines (held by Glencore) and **48 km northwest** of the Duke Project being explored by Amarc and Boliden.

## Property Highlights

- Undrilled porphyry prospect within the **Babine Belt**
- 2,770 hectare property earning into 100%
- Located north of Smithers on road network, in newly logged area
- Five-year drilling permit application in process
- **Initial drilling planned for 2026**

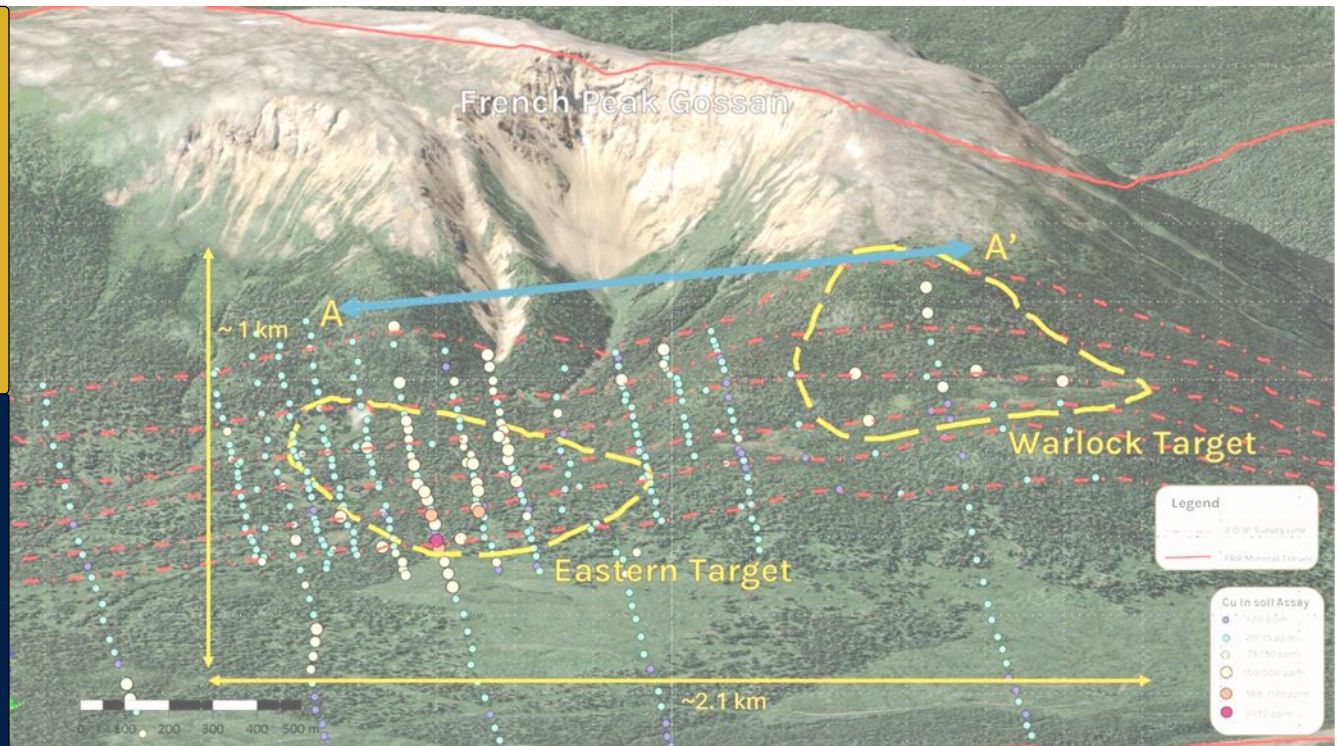
# Excalibur – Discovery Vectors

## Copper Mineralization

- Elevated copper related to chalcopyrite-pyrite stockwork in biotite-altered diorite porphyry
- Limited outcrop
- Between **500 to 1,170 PPM** copper in soils.

## Field Mapping

Abundant exposure of the peripheral system on the ridge adjacent to the target, referred to as the French Peak gossan, established structural controls and confirmed propylitic alteration (Epidote-Chlorite replacement of mafics).



Newly identified soil-covered targets with multiple discovery indicators pointing to a significant copper-gold porphyry system.

# Excalibur – Discovery Vectors

Newly identified soil-covered targets with multiple discovery indicators pointing to a potential copper-gold porphyry system.



## Coincident Anomalies

Coincident copper and gold in soil, IP chargeability, and magnetic highs define the targets.

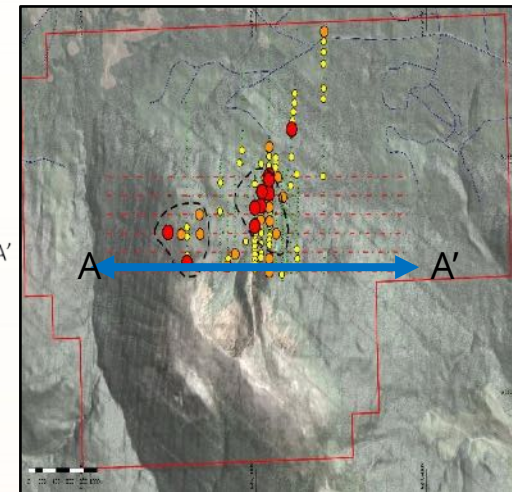
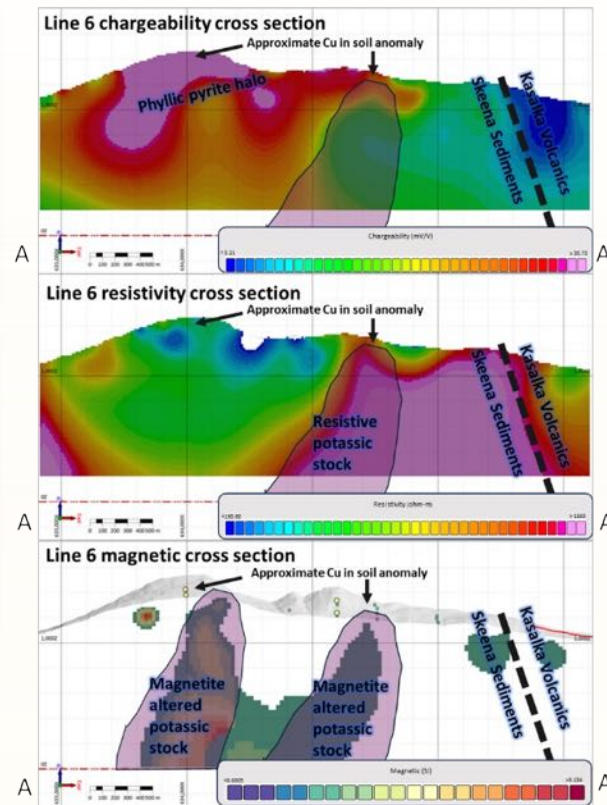


## Strong Geophysical Response

Suggest potassic core with overprinted pyritic phyllic halo — classic porphyry zonation signature.



Detailed drill planning in progress.  
Maiden Excalibur drill program targeted for Q2/Q3 2026.



## Excalibur – 2026 Next Steps

01

### Refinement of Geophysical Modelling

Detailed review in advance of final drill hole design

02

### Drilling

Maiden Excalibur discovery drill program planned for Q2/Q3 2026.



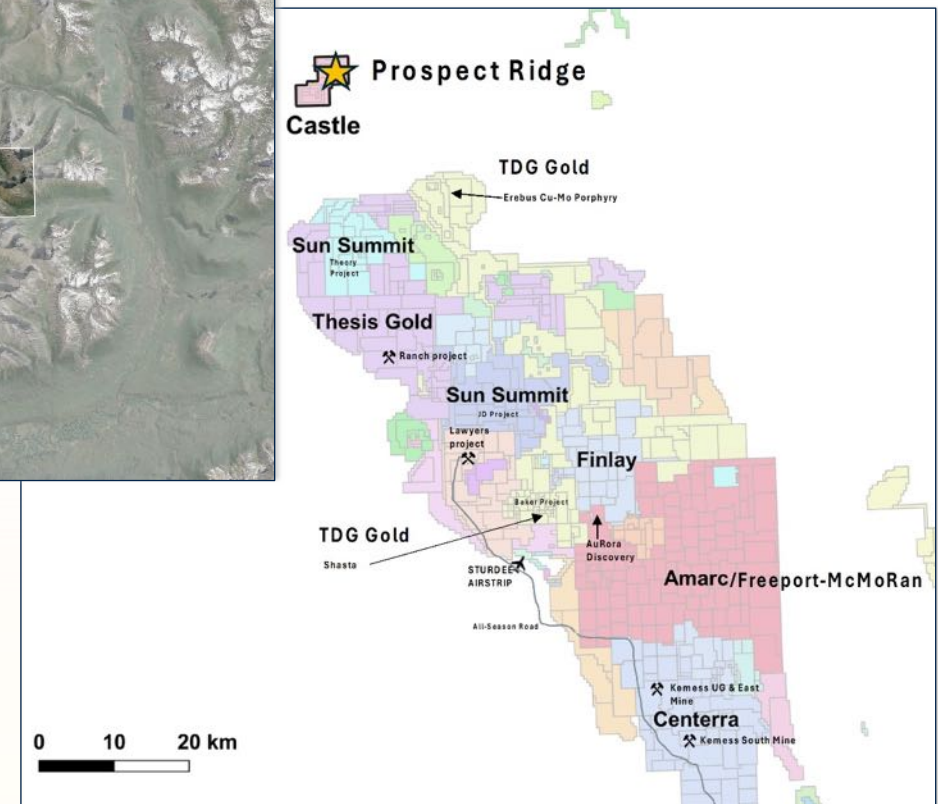
# Castle Overview

## Location & Setting

- Located in the **Toodoggone mineral district** of northern British Columbia, which forms part of the “Golden Horseshoe” district
- Unexplored copper-gold porphyry opportunity in a revitalized exploration district
- Recent discoveries and major company activity in the region

## Target Characteristics

- Proven **Jurassic-age porphyry target**
- Large intensely altered surface expression
- Located east of Newmont's **Red Chris mine**
- Northwest of Centerra's **Kemess mine**
- Similar target model to Amarc/Freeport's AuRORA/Joy discoveries



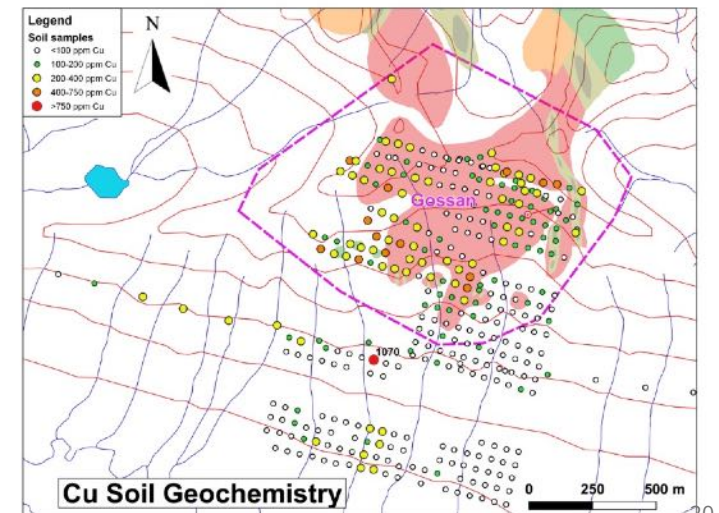
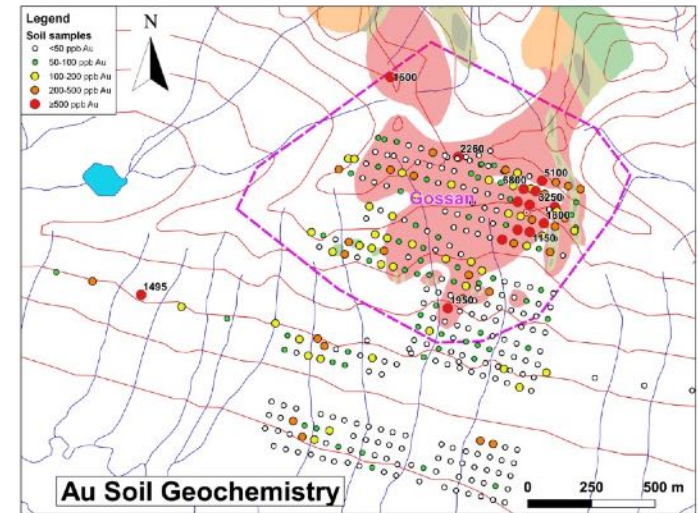
# Castle – Discovery Vectors

The main target is postulated as shallow alkalic copper-gold porphyry mineralization adjacent to major terrane-scale structures.

## Metal Endowment

Strong gold and copper anomalies in talus and soil developed over **>1,500 m<sup>2</sup>**.

Soil results include copper values above **0.1%** and gold values greater than **7 g/t**.



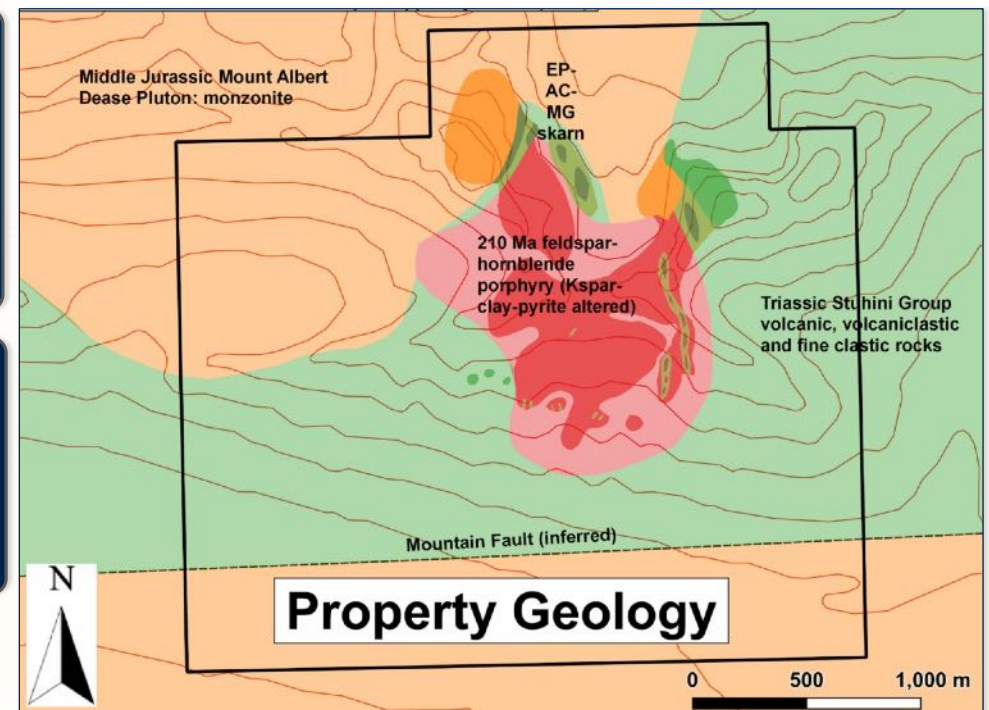
## Castle – Discovery Vectors

### Alteration & Mineralization

Mineralization associated with feldspar porphyry intrusions and an extensive hydrothermal alteration footprint, including pervasive clay-K feldspar-pyrite alteration, and a strongly oxidized lithocap.

### Age Consistency

**210 Ma age** of Castle porphyry consistent with major deposits in the district, such as Red Chris and Kemess.

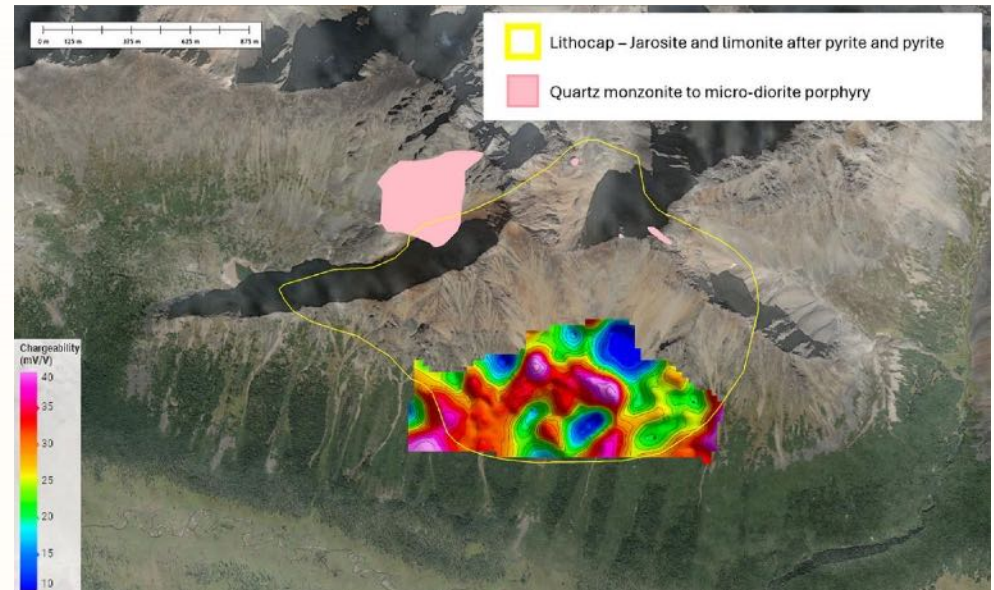


# Castle – Discovery Vectors

The main target is postulated as shallow alkalic copper-gold porphyry mineralization adjacent to major terrane-scale structures.

## Geophysical Confirmation

2025 reconnaissance IP survey delivered chargeability highs directly coincident with target model.



# Castle – 2026 Next Steps

01

## Hyperspectral / ML Remote Mapping

Remote sensing work using hyperspectral imaging and machine learning to map alteration mineralogy across the target area in advance of field mapping.

03

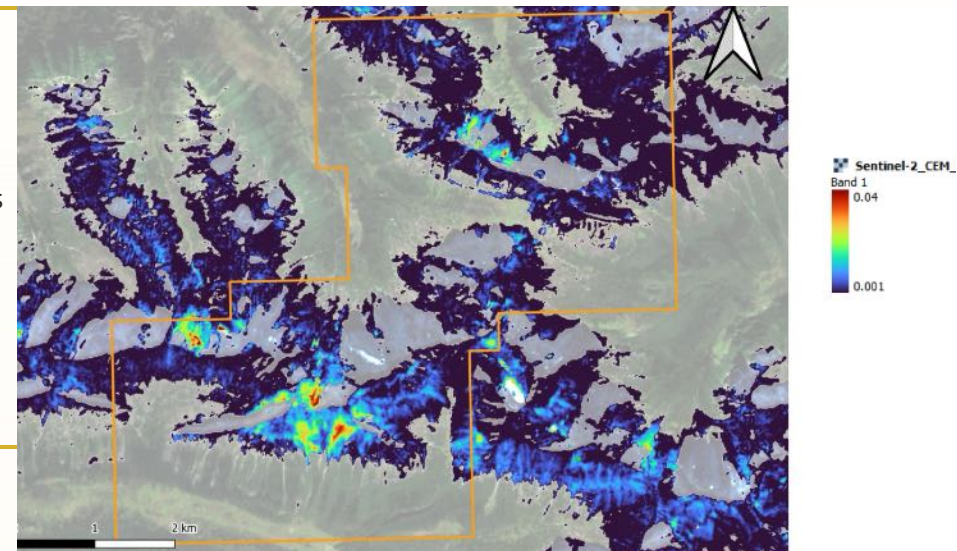
## Distributed Array 3D IP Survey

3D induced polarization survey to image the subsurface chargeability and resistivity structure of the target and expand previous coverage.

02

## Detailed Rock Sampling

Systematic geochemical sampling program designed to define vectors pointing to the mineralized core of the porphyry system.



# Capital Structure

As of April 2026, Prospect Ridge maintains a lean and well-structured capital base with meaningful insider alignment and a strong treasury to fund the 2026 exploration program.

## Share Structure

113.8M

Common shares  
outstanding

5.4M

Options

22.6M

Warrants

~141.8M

Fully diluted total securities

## Financial Highlights

- Treasury of approximately **\$2.0 million** as of June 2026
- Insider ownership of more than **6 million shares**, representing approximately **6%**
- Public float of approximately **108 million shares**
- 2025 and 2026 financings raised approximately **\$2.87 million**

## 2026 Catalysts



The company expects a highly active 2026 field season with multiple drill and target advancement catalysts — plus multiple industry conferences and investor events scheduled throughout the year.



🎯 A single discovery drill hole could transform the company. Multiple shots on goal in 2026.

# Why Invest in Prospect Ridge?



## Four BC Projects

Four 100% owned (or earning into 100%) British Columbia exploration projects with exposure to copper, gold, and critical metals.



## Three High-Priority Drill Targets

Plans to drill at least two projects in 2026, with a third advancing toward drill-ready status.



## Exceptional Torque Potential

Market capitalization below **\$10 million** provides incredible potential for torque on discovery.



## Funded for Exploration

Treasury of approximately **\$2.0 million** to execute the 2026 discovery program.

A single discovery drill hole could transform the company.

# Contact Information



## Corporate Contacts

### **Mike Iverson**

Chairman and Director

### **Len Brownlie, Ph.D.**

President and CEO

---

### **Website:**

[prospectridgeresources.com](http://prospectridgeresources.com)

**CSE: PRR    OTCQB: PRRSF**

**Prospect Ridge Resources** is positioned at the intersection of world-class geology, experienced leadership, and a highly active 2026 exploration program. We invite you to join us on the journey to discovery.

# "Fortune befriends the bold."

— *Emily Dickinson*

