



# PROSPECT RIDGE RESOURCES CORPORATION

**Focused on the  
discovery of copper-gold  
porphyry deposits in BC**

**January, 2026**

Photo of Excalibur gossan

**CSE: PRR OTCQB: PRRSF  
[prospectridgeresources.com](http://prospectridgeresources.com)**





# FORWARD LOOKING INFORMATION

- Some statements in this presentation contain forward looking information. These statements address future events and conditions and, as such, involve inherent risk and uncertainties. Actual results could be significantly different from those projected. Risks and uncertainties of the Company's business are discussed in the Management Discussion and Analysis of the Company's Annual and Quarterly Reports, available both on the Company's website at [www.harvestgoldcorp.com](http://www.harvestgoldcorp.com) and at [www.SEDAR.com](http://www.SEDAR.com).
- A number of mineral resources or significant occurrences disclosed herein relate to nearby properties owned by other companies, and the data presented have been extracted from these companies' press releases and websites.
- A Qualified Person has been unable to verify this information from the adjacent properties, and such results are not necessarily indicative of potential quantities or grades of mineralization on the Company's properties. Ron Voordouw, Ph.D, P.Geo. Director of Geoscience for Equity Exploration Consultants Ltd., a consultant to the Company and a qualified person as defined under the terms of National Instrument 43-101 supervised the preparation of the technical information contained herein. **Please do your own due diligence**

## The management team includes the founders of Fortuna Silver, Niogold Mining, First Mining Gold and Goldrush Resources: over 100 years of combined mineral exploration & development experience



**Michael Iverson**  
CHAIRMAN& DIRECTOR

**Co-founder, Fortuna Silver Mines Inc.**

- > 30 year experience in capital markets
- Founder Niogold Mineral Corp.
- Director Volcanic Gold Mines



**Len Brownlie, Ph.D**  
PRESIDENT, CEO & DIRECTOR

- 40 years experience as a Director/Officer of public exploration companies
- Former CEO, Goldrush Resources Ltd., which discovered the Ronguen gold deposit in Burkina Faso, West Africa
- Goldrush merged with First Mining Gold in 2016



**Toby Lim**  
DIRECTOR



**Jacques Brunelle**  
DIRECTOR



**Pat Donnelly, B.Sc. (Hon Geo.), MBA**  
DIRECTOR

**Co-founder, Fortuna Silver Mines Inc.**

- > 30 year experience in exploration, capital markets, corporate development, investor relations
- VP Corporate Development, Alaska Silver Corp
- Former base metals mining analyst
- Former VP Capital Markets, Tudor Gold Corp.
- Former CEO Serra Metals Corp.
- Former VP Trilogy Metals Inc.
- Cofounder, First Mining Gold Corp.



**Bennett Liu**  
CFO



**Bradley Scharfe**  
DIRECTOR



**Seema Sharma**  
LAND MANAGER



# Technical Advisory Committee: over 180 years of combined exploration and development experience



**Henry Awmack, retired mining engineer**

**Co-founder, Equity Exploration Consultants Inc.**

- Track record of exploration success:
- Part of the discovery team for Cobre Panama copper mine (Panama);
- Wolverine VMS mine (YT);
- Axe project (Kodiak Copper, B.C.);
- HWY 37 project (Kingfisher Metals, B.C.)



**David Caulfield, retired geologist**

**Co-founder, Equity Exploration Consultants Inc.**

- Co-founder of Rimfire Minerals Corporation
- Former director of Orogen Royalties Corp
- Co-founder, Chairman of C3 Alliance Corp.
- Past President (2005) Association for Mineral Exploration of BC (AME BC)
- Director and Vice Chair Geoscience BC (until 2014)



**Mark Baknes, MSc., P.Geo.**

**Consulting Geologist**

- Thirty years experience on porphyry deposits in the northern Cordillera & Golden Triangle
- Former Vice-President of Exploration for Rimfire Minerals Corporation
- Winner of the H.H. "Spud" Huestis Award (2003 AME BC)



**Michael Michaud, MSc., P.Geo.**

**President & CEO Redpine Exploration**

- >Thirty years mineral exploration experience
- Former Chief Geologist, Iamgold Corp.
- Former VP Exploration, St. Andrew Goldfields
- Former Principal SRK Consulting Inc.
- Former Chief Geologist, N.A. Palladium



**John McVey, P.Eng**  
**Former CEO, Procon Mining**

- global leadership experience in underground mine development and operations.

**“There is no substitute for experience”**

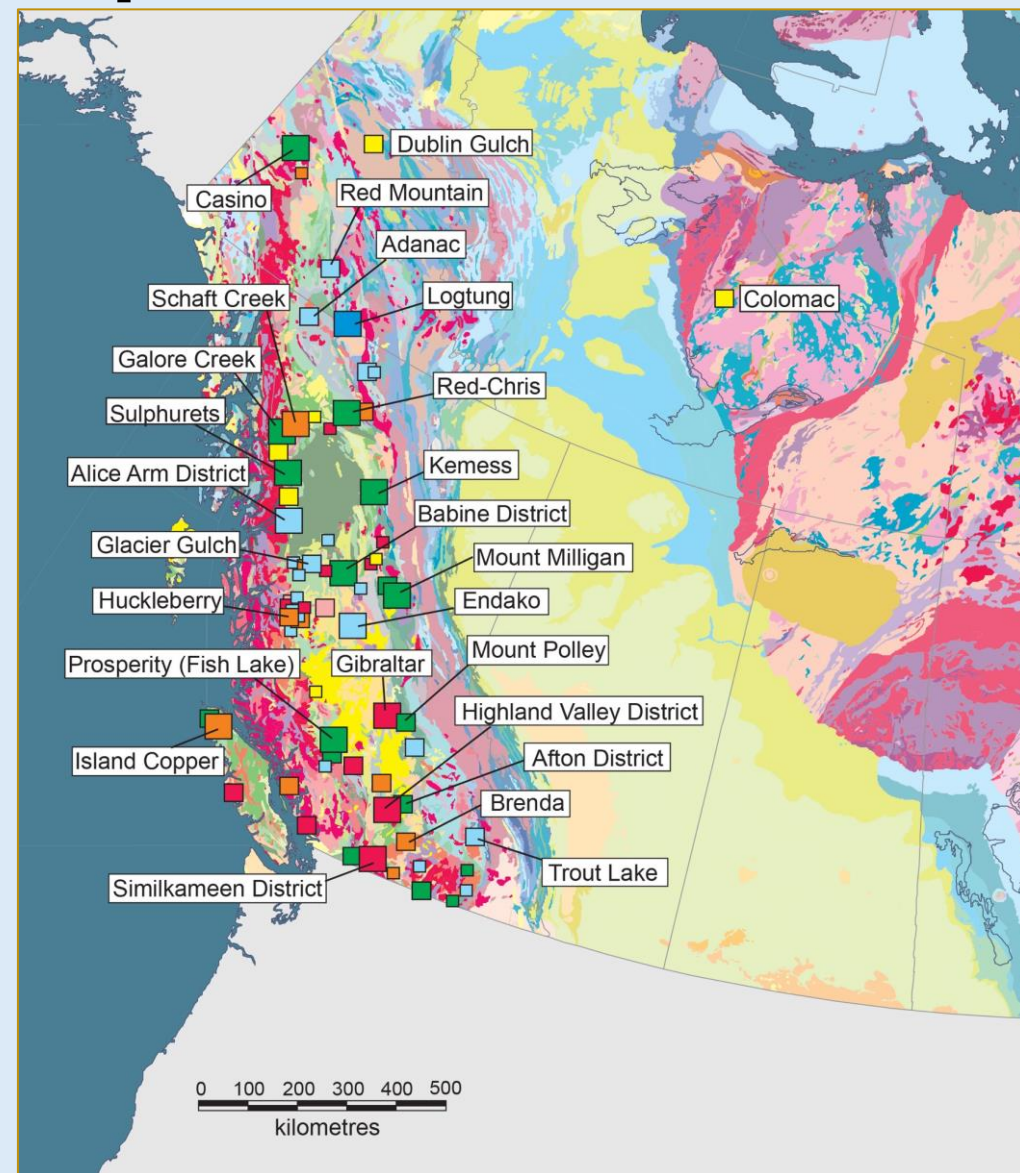
# Our Goal: To discover the next world class copper/gold porphyry deposit in BC

**“In British Columbia porphyry targets have the best chance of becoming significant mines and ultimately attracting financing from the major mining companies.”**

*Henry Awmack, cofounder, Equity Exploration Consultants Ltd.*

British Columbia is home to the largest number of **World Class Copper/Gold Porphyries** in North America

**The future of mining in B.C. will be the discovery of buried porphyries**







## Our commitment to Discovery:

\$2.1M spent in 2025 to develop drill targets on three projects for 2026

Project	Approximate Budget	Program	Outcome
Holly Grail/ Knauss Creek	\$270,000	Rock sampling, mapping	IP survey in 2026
Camelot	\$850,000	2,034 m DD program	Discovered Cu/Au porphyry; Phase 2 Drill program
Excalibur	\$524,050	26 km IP, soils, mapping	Drill targets for 2026
Castle	\$472,455	Mag, ~7 km IP, rock sampling, mapping	Drill targets for 2026
Total	CDN\$2,116,505		



PROSPECT RIDGE

# Our Projects

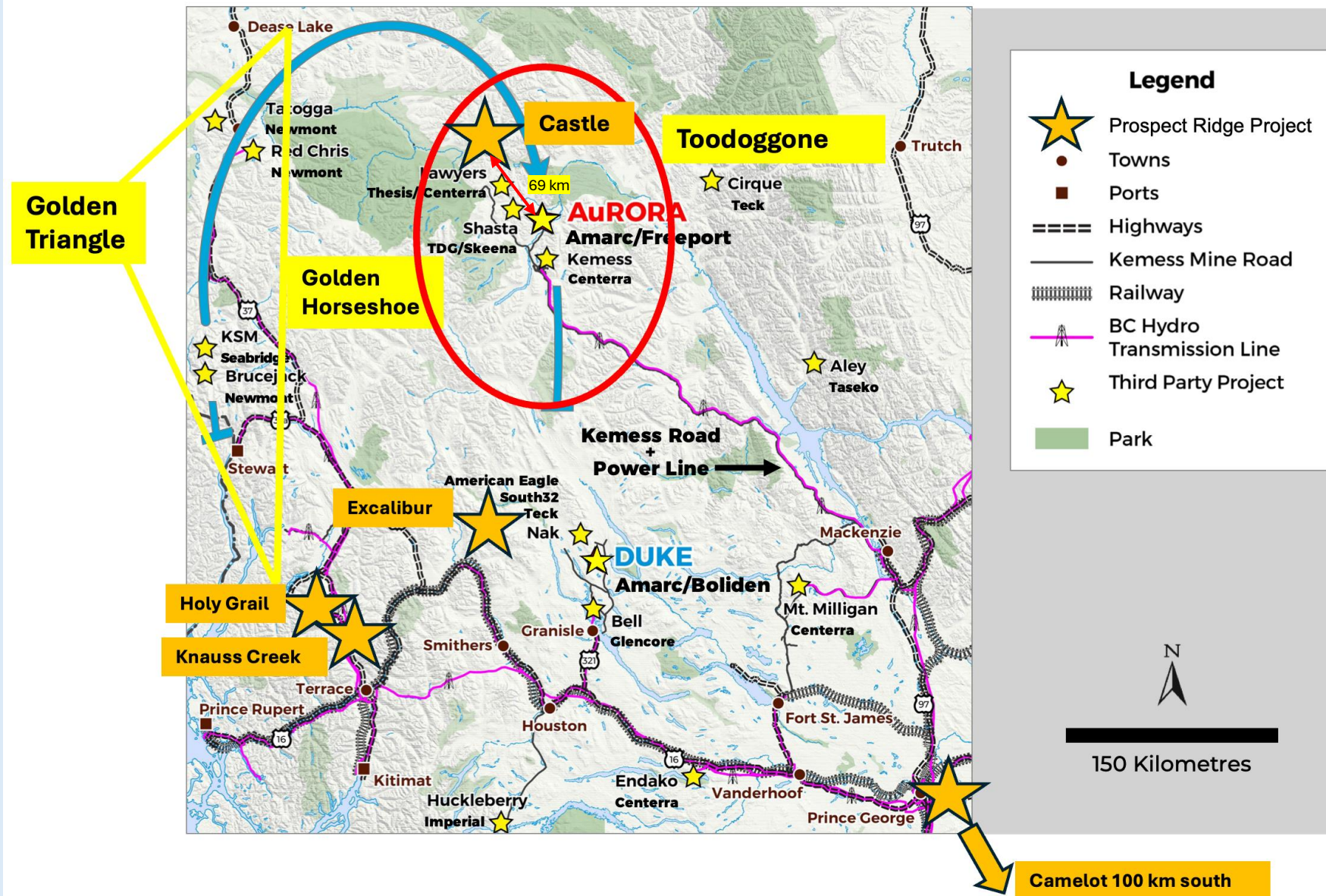
Five 100% owned\* projects:

**NEW:** Castle – gold-copper porphyry target in Toodoggone (Golden Horseshoe)

**NEW:** Excalibur - gold-copper porphyry target near Bell/Granisle former producers

**NEW:** Camelot - gold-copper porphyry target near Woodjam porphyry cluster and Mt. Polley mine

Holy-Grail/Knauss Creek – Polymetallic vein targets on potential southern extension of the Golden Triangle



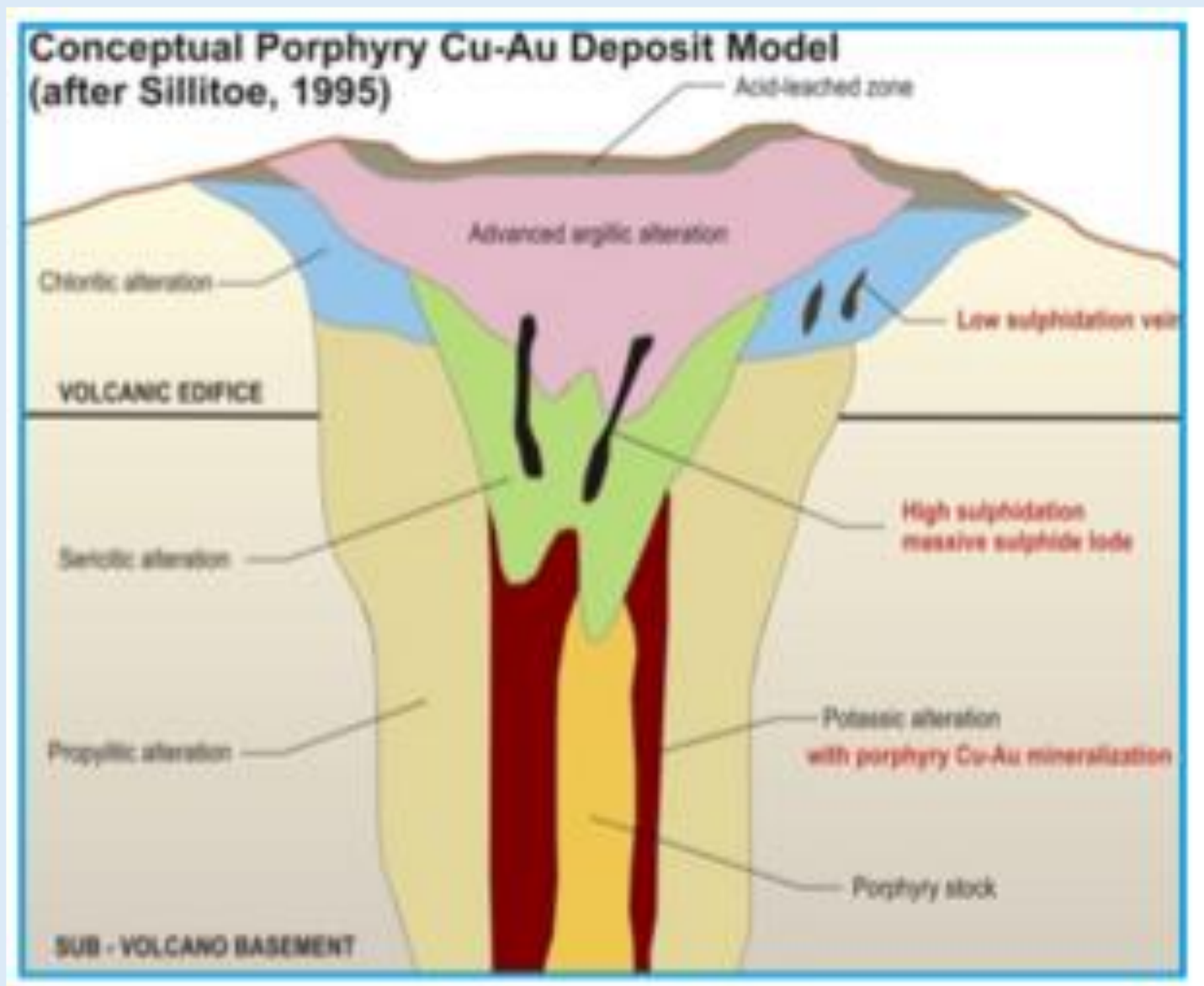
# We target shallowly buried porphyry deposits

## WHY?

“Although at least 80% of the world’s valuable resources show no sign of existence above ground, some 85% of operating mines were dug as a result of surface observations.”

The Economist – July 14, 2025

**The future of mining in B.C. will be the discovery of buried porphyries**



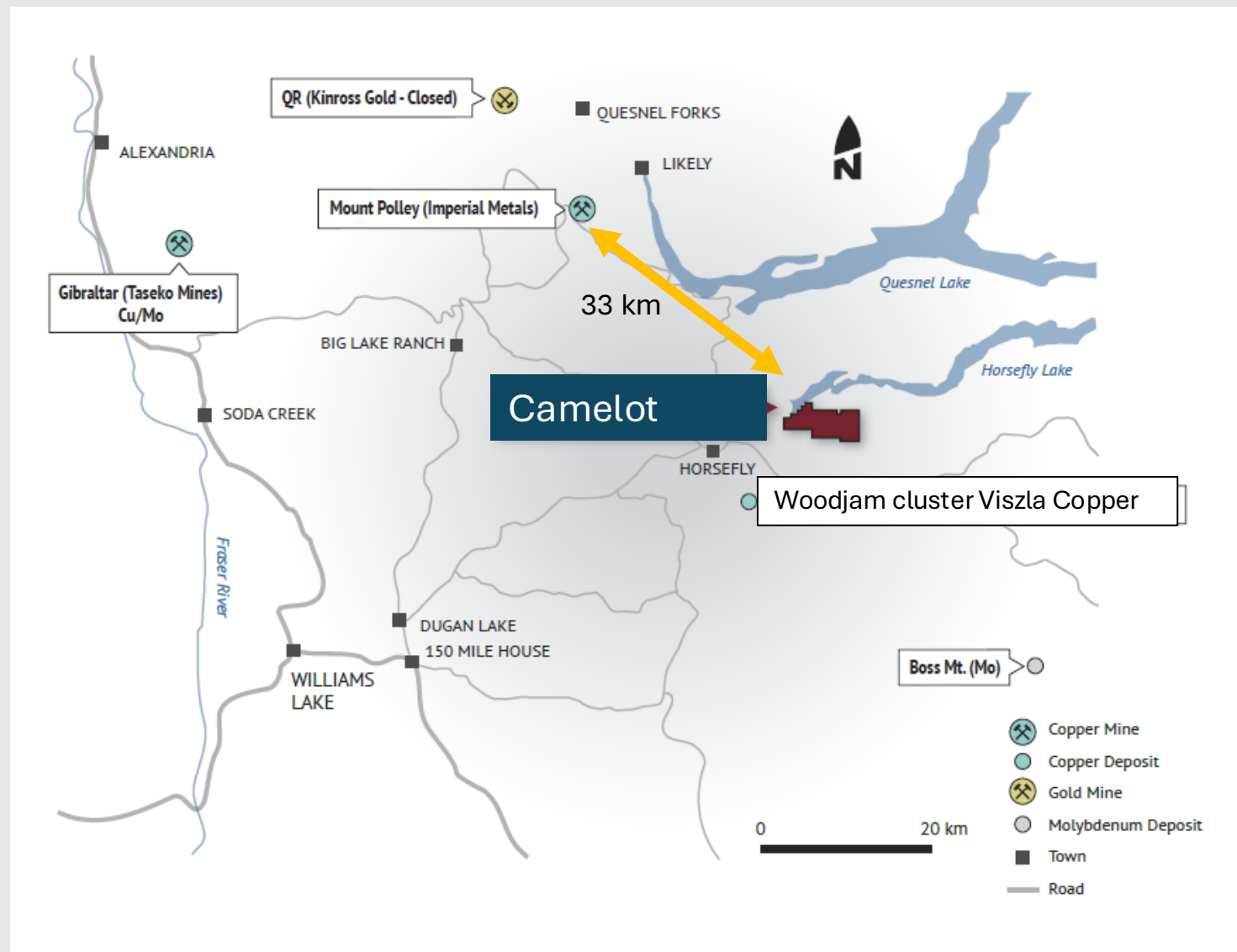


# Camelot

- Project covers 2,646 hectares in central British Columbia
- Sixty-five kilometres east of Williams Lake
- Extensive road access on recent logging roads
- MYAB drill permit application for 2026 pending

Target: Coincident IP, soil and mag anomalies under shallow till cover

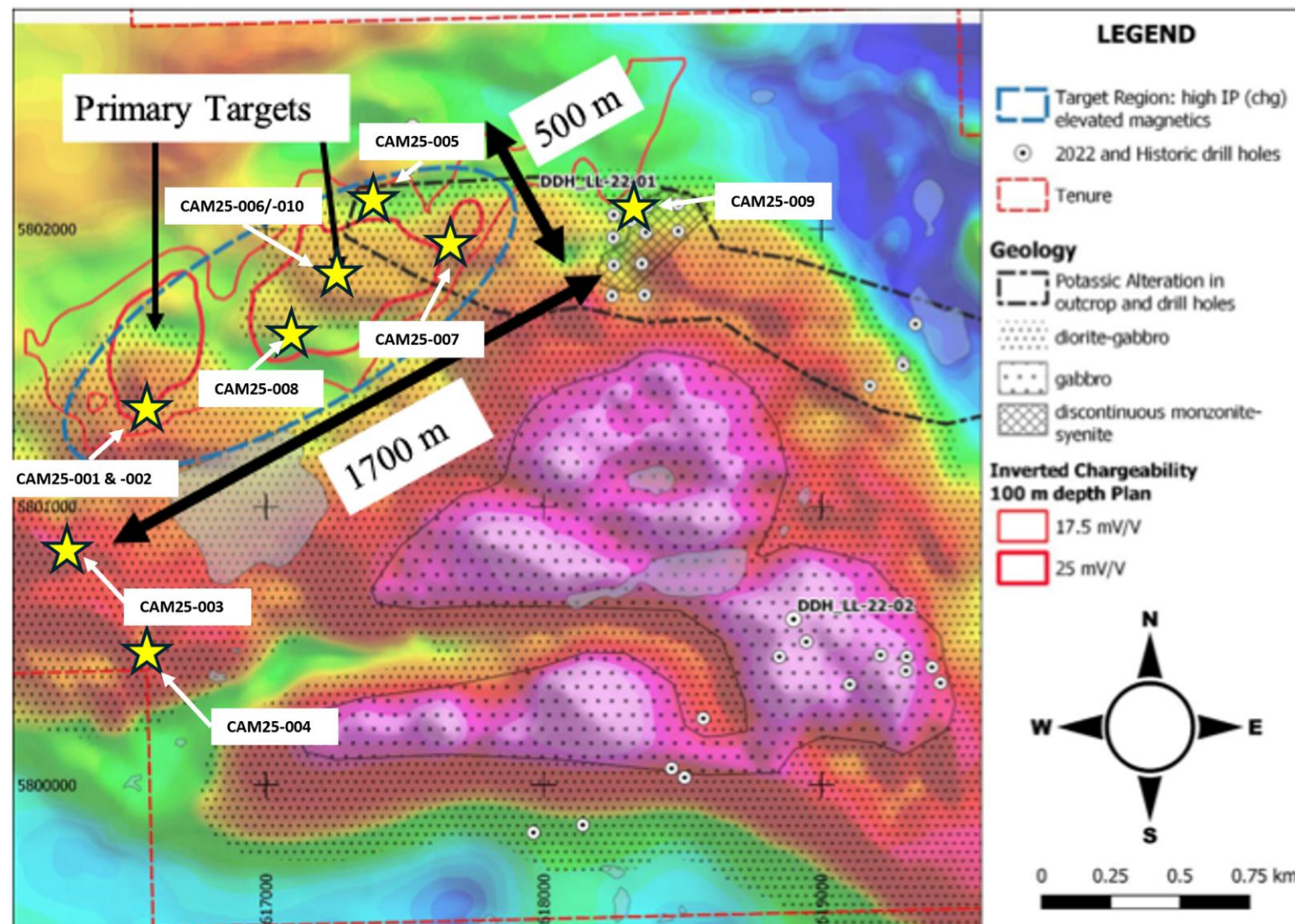
Acquisition cost: \$200,000 in shares or cash at PRR's option;  
1.5% NSR Royalty



# Camelot Main Target:

**Target: Coincident IP, mag and soil anomalies under shallow till cover**

**Maiden Drill Program:  
2,034 metres drilled in  
10 shallow (200 m) holes  
in November, 2025**







# Camelot: Intercepts from DDH 25-009 (first assays received):

¾ of entire drill string  
was mineralized

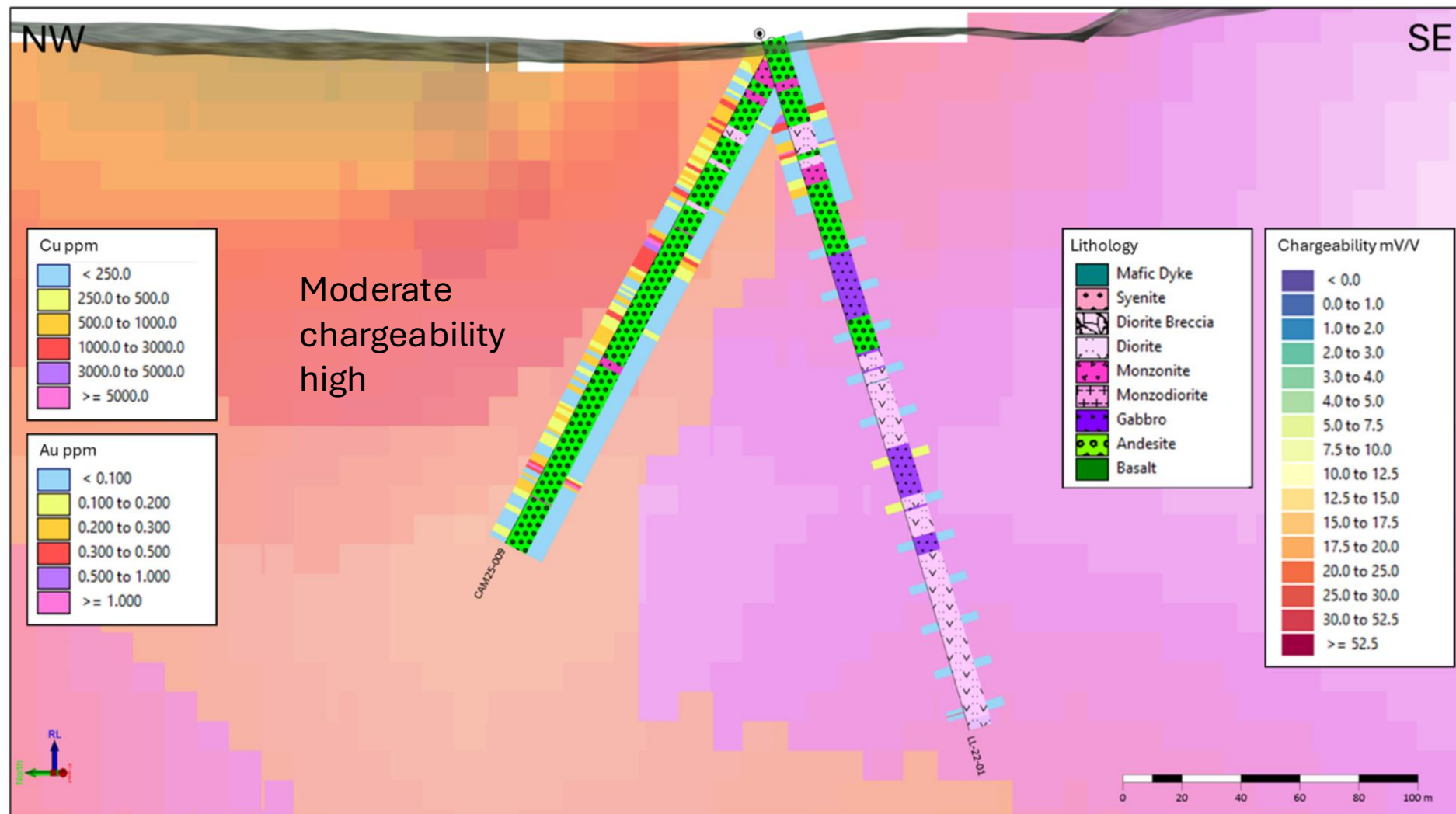
*The dominance of pyrite over chalcopyrite suggests that we have not yet encountered the core of the porphyry system and we look forward to seeing stronger calc-potassic alteration and higher Cu-Au grades as we vector towards the productive core.*

High grade sub-intervals

Hole ID	From (m)	To (m)	Interval (m)	Au (g/t)	Cu (%)	Ag (g/t)	Mo (ppm)
CAM25-009	23.4	180.0	156.6	0.06	0.08	0.34	3.8
including	76.0	95.0	19.0	0.14	0.18	0.65	3.9
which includes	79.5	87.0	7.5	0.24	0.32	1.09	5.8
and including	145.0	170.0	25.0	0.13	0.11	0.52	4.0
which includes	167.0	170.0	3.0	0.76	0.57	1.83	10.6
and which includes	168.0	169.0	1.0	1.77	1.28	3.93	9.4

- association of mineralized intervals with chalcopyrite, epidote + K-feldspar ± albite alteration, and quartz ± carbonate veins
- Au to Cu ratios (determined from core assays) indicate a positive correlation between gold and copper grades

# DDH CAM25\_009 X-Section







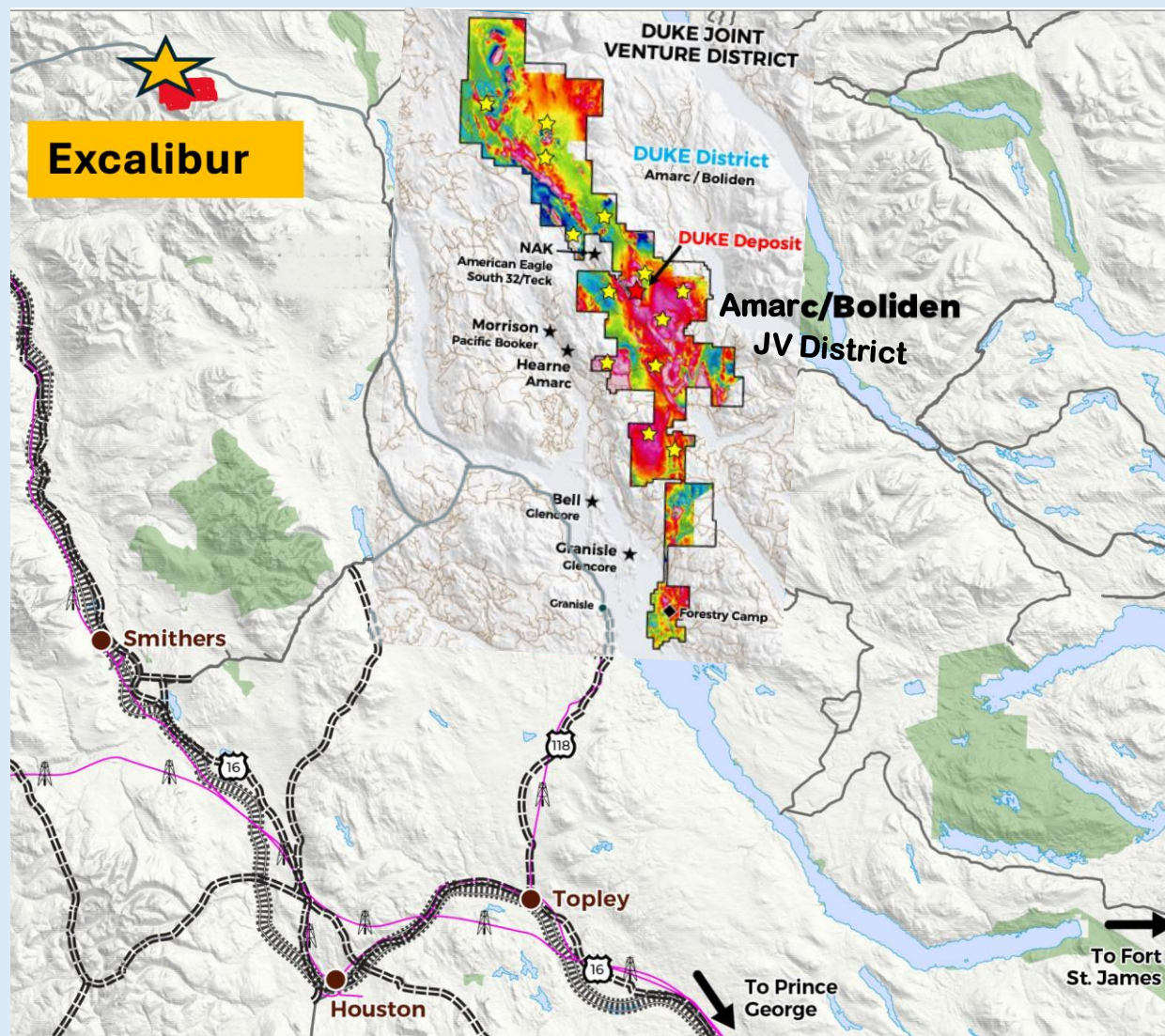
## Excalibur



# Excalibur

- Undrilled Babine Belt porphyry prospect
- 27.71 km<sup>2</sup> project area
- 100% owned\*
- 120 road-km N of Smithers by road
- CNR rail and power along Highway 16
- Three open pit mines within 200 km (Mt. Milligan, Huckleberry, Endako)
- Two past-producing open pit mines within 80 km (Granisle, Bell Copper)

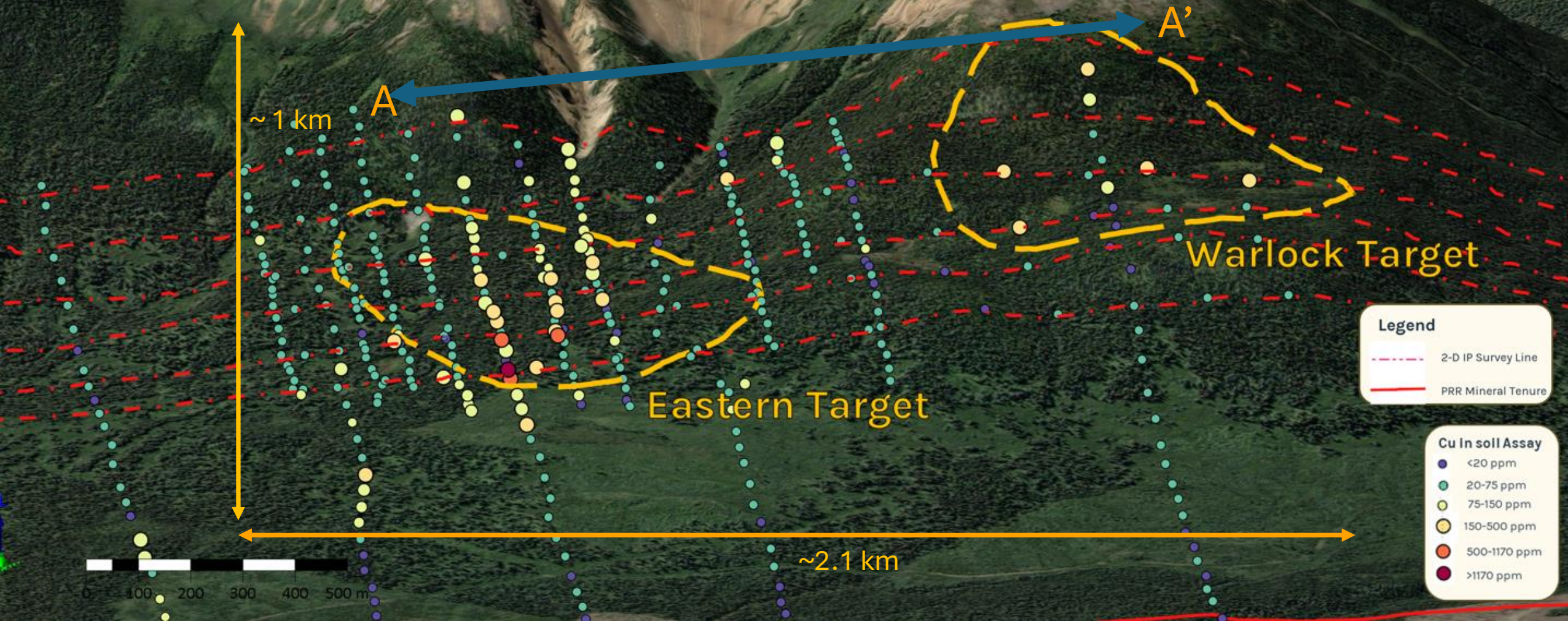
\*subject to option payments and 0.6% NSR royalty





French Peak Gossan

# Excalibur: Multiple vectors for discovery – size, alteration, Cu in soil assays; coincident soil/IP/mag targets

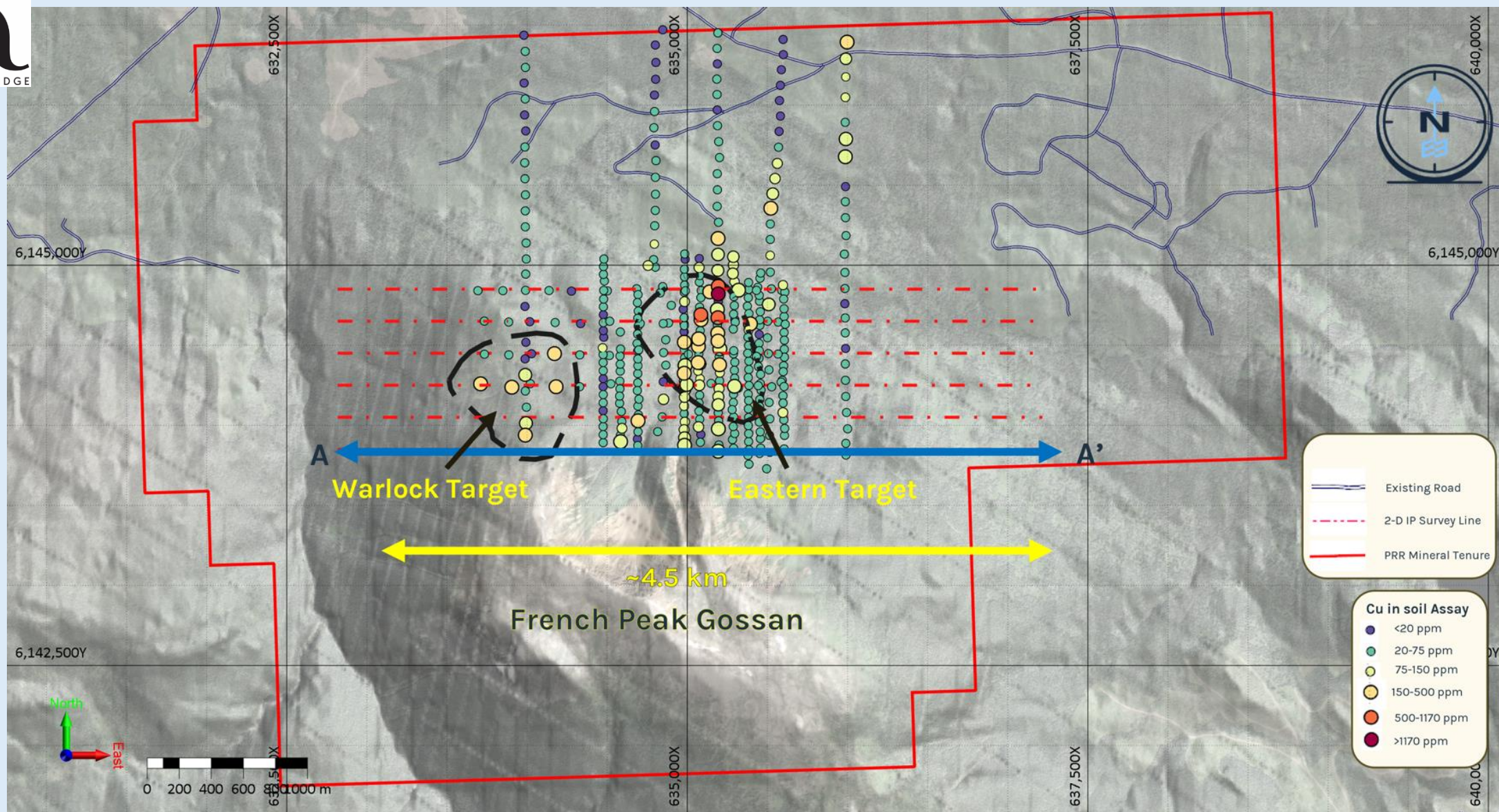




Excalibur  
western  
cut block  
-looking  
south









Cross-sections of

Chargeability

Resistivity

Magnetics thru

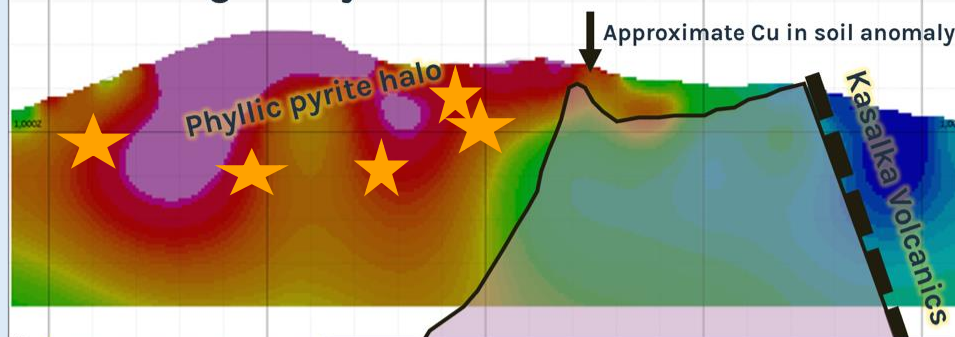
E-W line A to A'

Potential drill target



*The zone of coincident moderate chargeability and magnetism is interpreted to be a copper-bearing drill target, with high chargeability rocks to the west interpreted as the pyritic rich phyllic halo.*

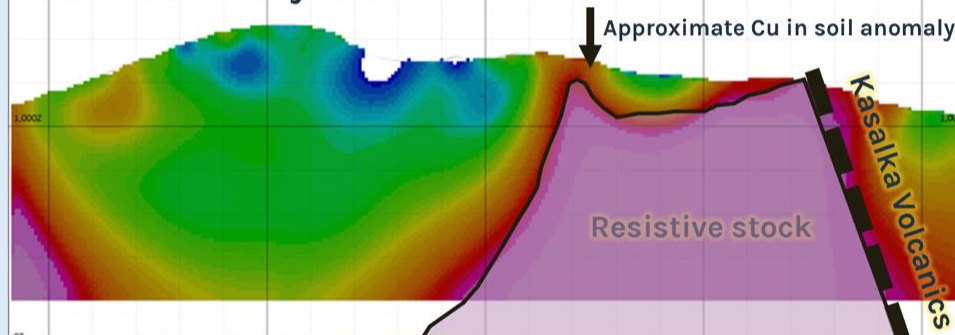
Line 6 chargeability cross section



A

A'

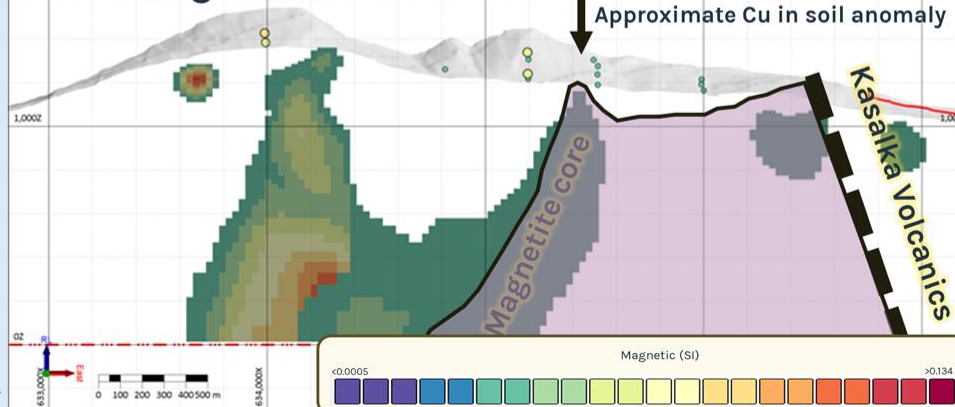
Line 6 resistivity cross section



A

A'

Line 6 magnetic cross section



A

A'





# Castle: Targeting the upper levels of an alkalic Au-Cu porphyry in the Golden Horseshoe

“We first got excited about Castle because of its strong and large gossan with unexplained gold-copper soil geochemistry. It was only when we received the petrographic reports showing pervasive Kspar-clay-pyrite alteration and the presence of albite and tourmaline that we realized its **strong similarity to the top of the Cadia\* alkalic Cu-Au porphyry deposits.**”

- Henry Awmack, co-founder Equity Exploration Consultants and property vendor

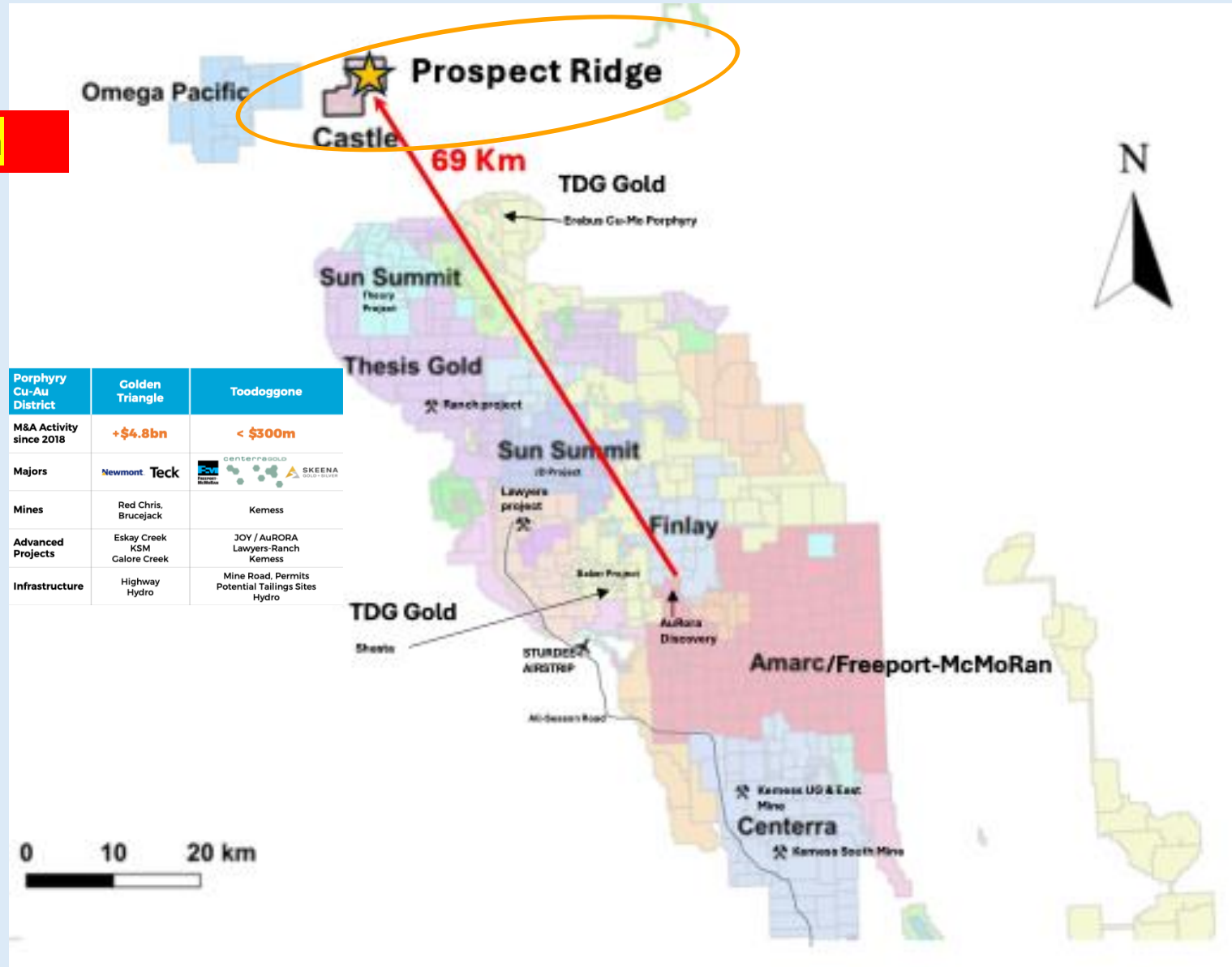
*\*Located in New South Wales, Australia. According to Wilson (2003), Cadia is one of the largest gold-rich porphyry districts in the world*



# Castle: located in the Toodoggone

“Canada’s potentially last World Class Cu-Au District”

1. Highly prospective area



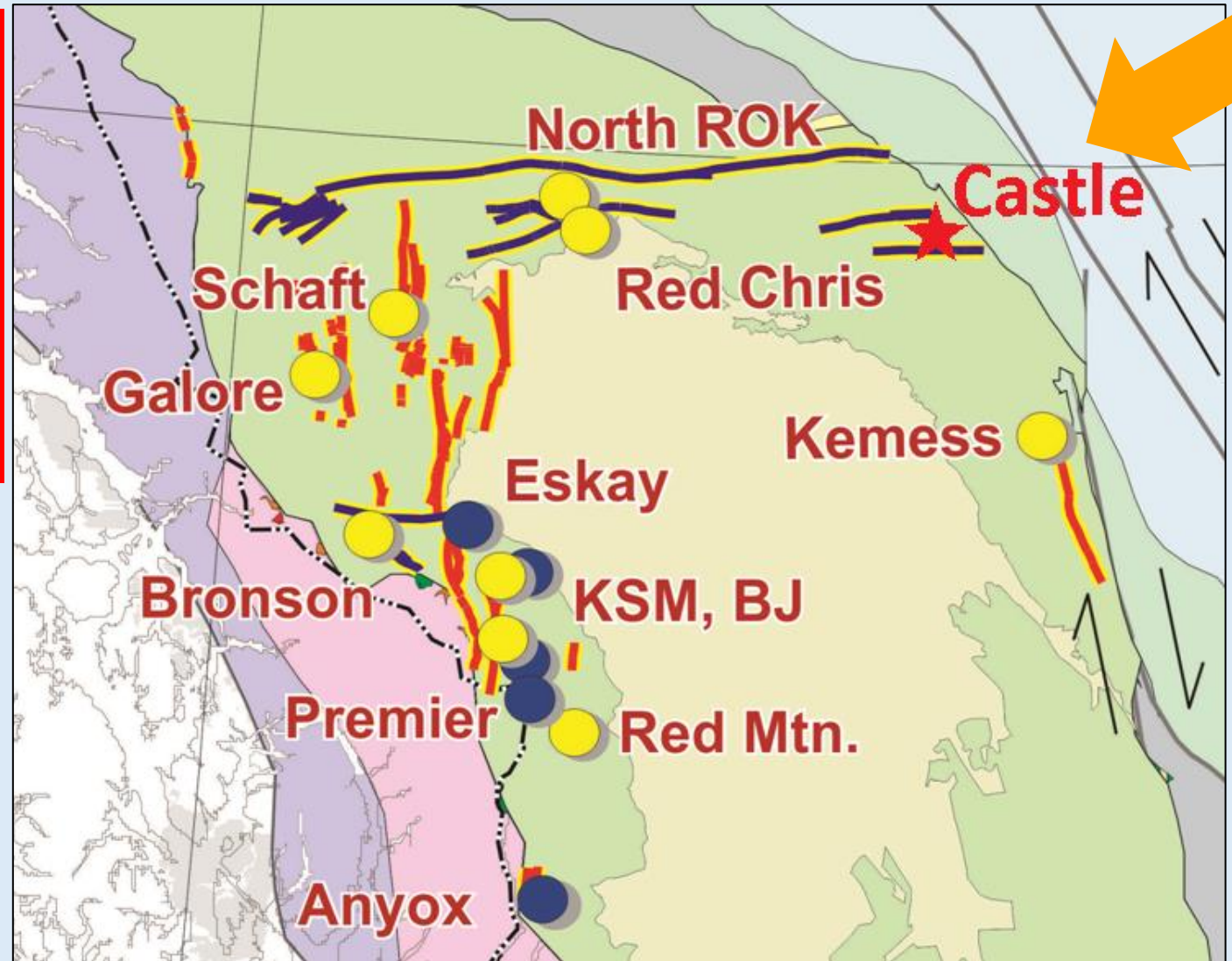
# Golden Horseshoe porphyry deposits associated with E-W and N-S regional faults

## 2. Regional Setting:

Castle sits over prospective regional fault

## 3. Age dating:

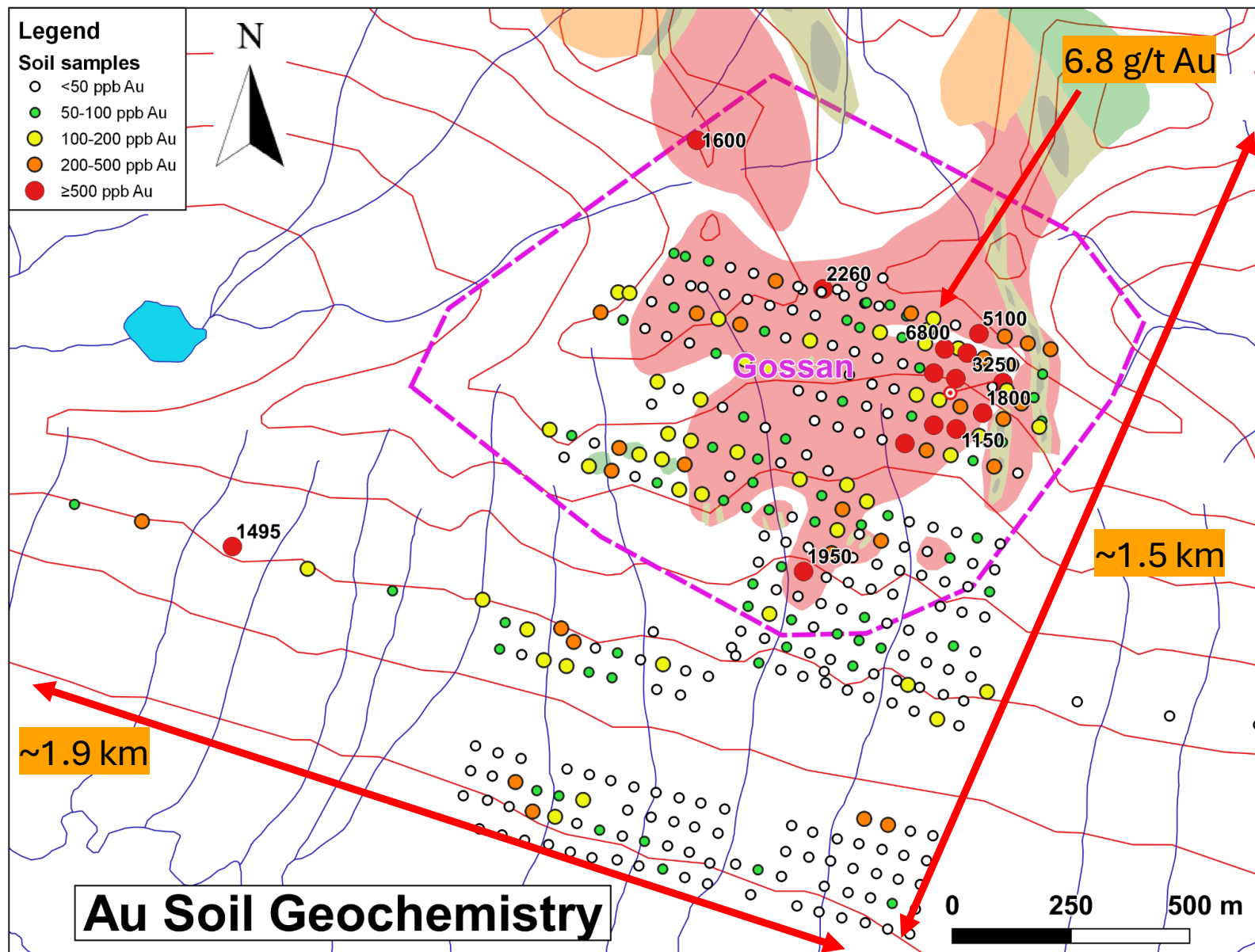
Same relative age (209.7 +/- 1.7 Ma)  
as Red Chris (204 Ma) and Kemess (201 Ma)



# Castle: High grade Au (up to 6.8 g/t) in soils

## 4. High grade gold in soils:

**Maximum soil values:**  
 6800 ppb [6.8 g/t] Au,  
 720 ppm Cu,  
 150 ppm Pb\*\*

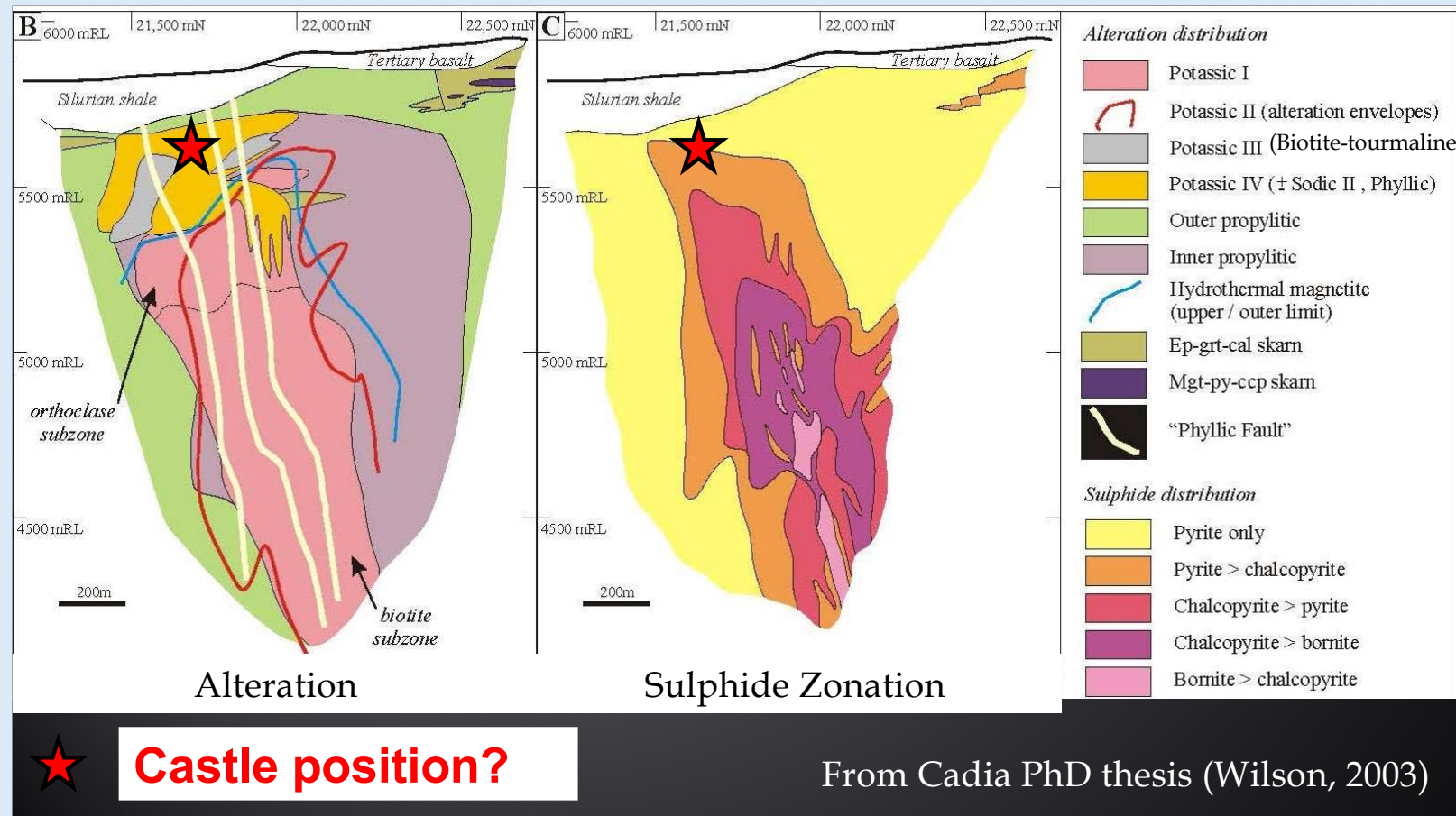


\*\*AR 9,335 (Vulimiri and Crawford (1980) results of 282 soil samples updated by Poloni (1988) and cited by Awmack (2015) AR 35,663 page 12.



Castle target:

Hypothesized  
top of  
Excalibur  
relative to  
Cadia



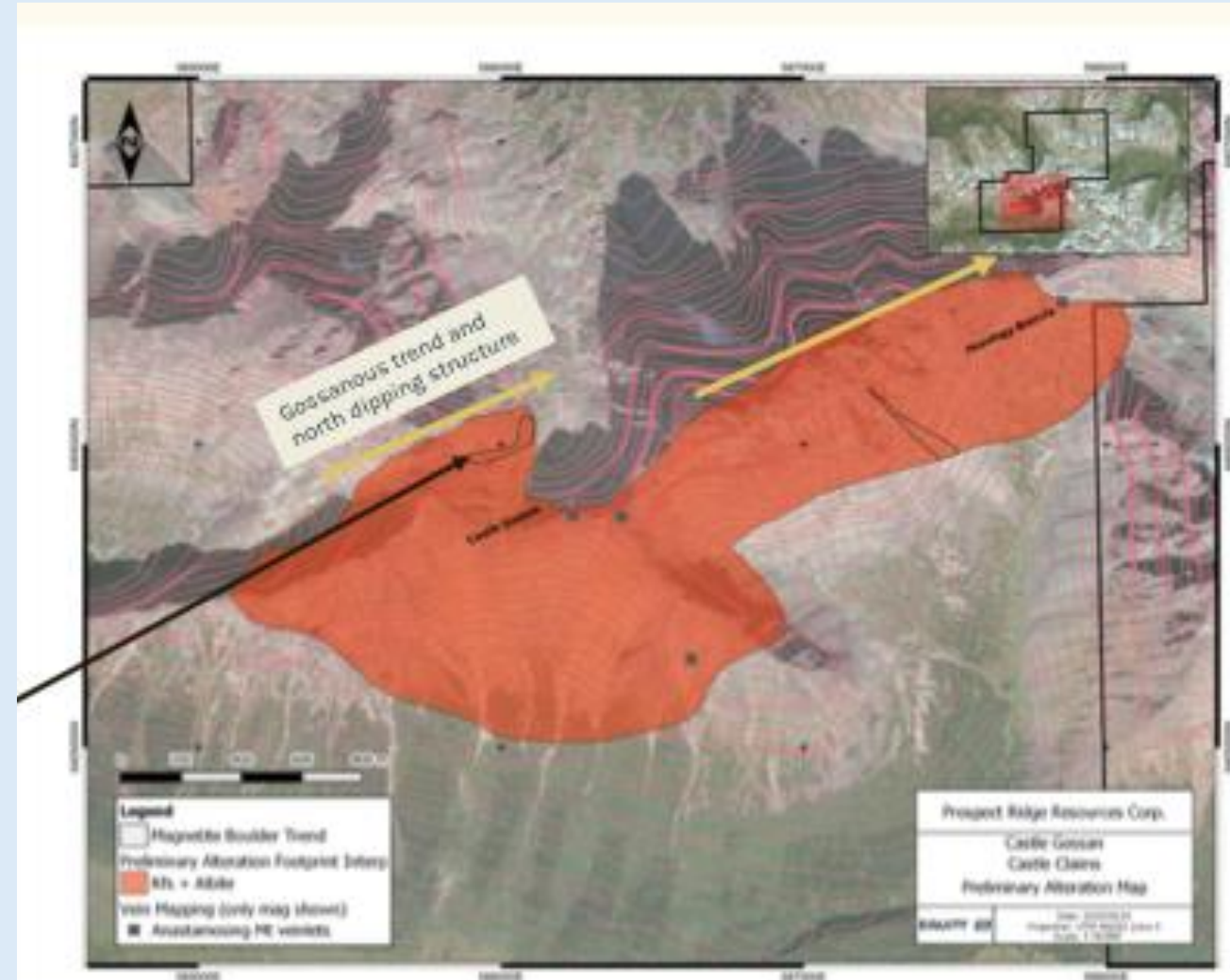
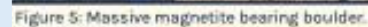
*Interpreted cross-section of the Cadia Far Fast deposit with hypothesized top of Castle gossan shown with a red star.*

(\*Source: Wilson, A. 2003: The geology, genesis and exploration context of the Cadia gold-copper porphyry deposits, NSW, Australia. University of Tasmania Ph.D Thesis)

5. Pervasive Alteration: K-feldspar+albite alteration found at both Castle and Cadia:

6. 2025 mapping program confirmed intact lithocap

***Strong comparison with upper levels of Cadia alkalic Au-Cu porphyries***





# 2025 Castle Work Program:

7 line-km 3D Induced Polarization survey  
500 line-km Aeromagnetic survey

***Results to be  
announced soon along  
with preliminary drill  
collar locations***



# Capital Structure

106,397,123

Shares Issued

6,550,000

Options

29,120,347

Warrants

Expiration: June, 2026 –  
Dec. 2027

\$0

Debt

142,067,470

Fully Diluted

As at December 22, 2025

>6,000,000  
Insiders~  
6%

100,000,000  
Public Float  
94.0%

2025 financings raised \$2.42M

Working Capital **\$2.3 M (Dec. 29/25\*)**

\*includes CMFT PP  
proceeds to be  
received Dec. 29/25

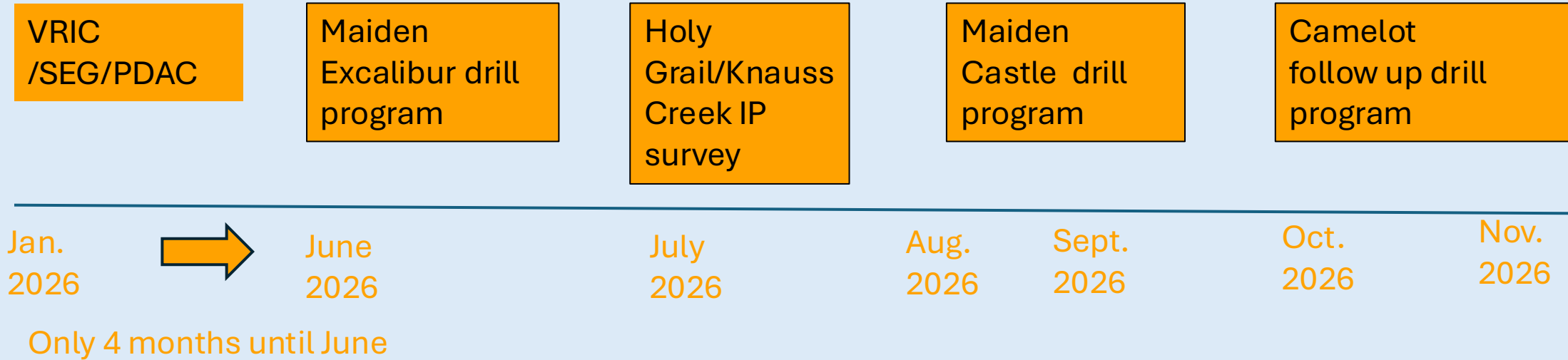
CSE: PRR | OTC: PRRSF | FRA: OED







# 2026 Timeline for discovery



# Why Invest in Prospect Ridge

- ✓ Five 100% owned B.C. exploration projects targeting world-class gold-copper and critical metal deposits
- ✓ three high priority drill targets and plans to drill a minimum of two projects in 2026
- ✓ <\$10 M market capitalization with \$2.2 M treasury
- ✓ One drill hole that leads to a DISCOVERY changes everything



The background of the slide is a wide-angle photograph of a rugged mountain range. The mountains are covered in reddish-brown soil and sparse green vegetation. The sky is a clear, bright blue with a few wispy clouds. The text is overlaid on this image.

**Fortune befriends the bold.'** – Emily Dickinson

**Mike Iverson**  
**Chairman & Director**  
**[Mike.Iverson@prospectridgeresources.com](mailto:Mike.Iverson@prospectridgeresources.com)**

**Len Brownlie, Ph.D**  
**President and CEO**  
**[len.brownlie@prospectridgeresources.com](mailto:len.brownlie@prospectridgeresources.com)**