

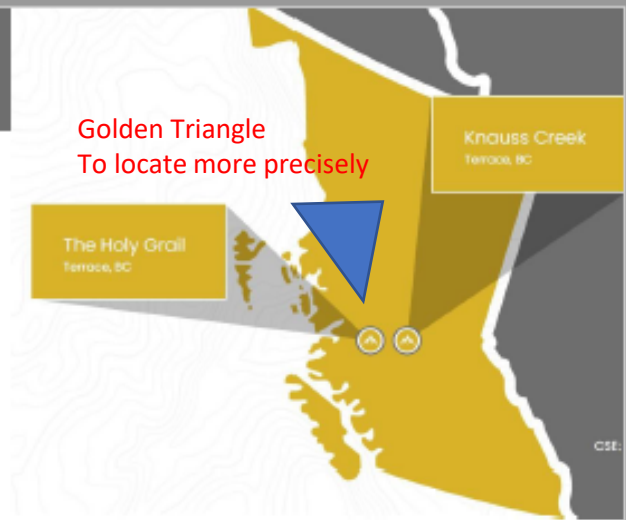
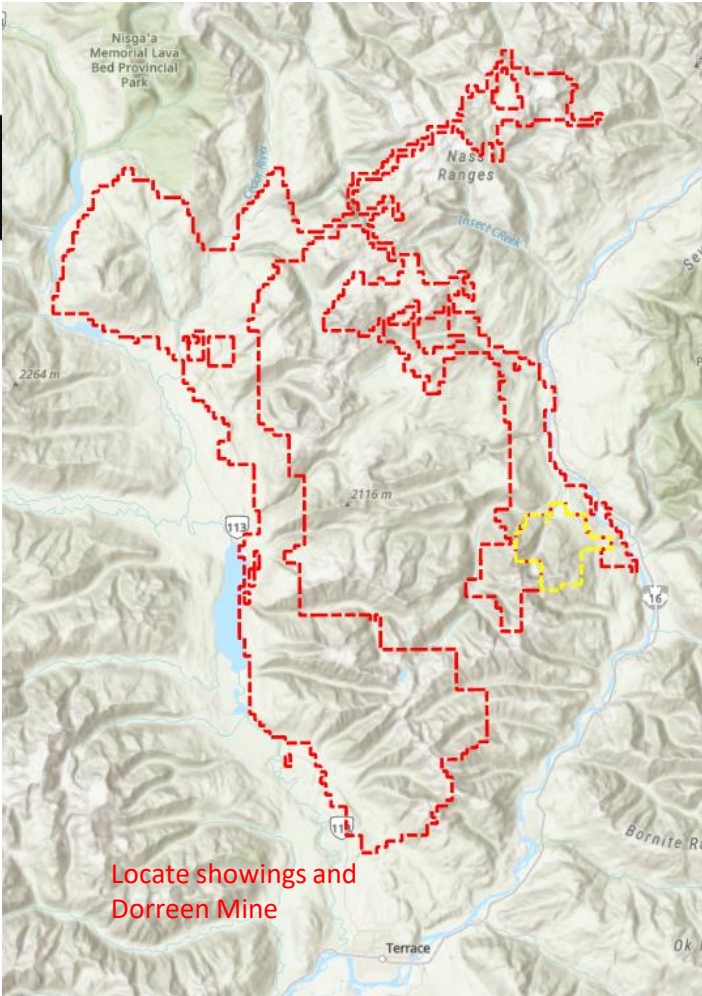
# HOLY GRAIL PROPERTY

**Text in email**

The Holy Grail Property is located 10km north of Terrace, BC; and currently covers 69,515.45 Hectares, bordering the historical Golden Triangle.

The property is easily accessible with multiple serviced roads, logging roads, and ATV trails that crosscut the property. Combining the favorable access with the three phase powerlines that transect the claim block, this provides for cost effective exploration and greater feasibility when a significant deposit is delineated.

The Holy Grail claim block has 12 past-producing high-grade gold and silver hard rock mines within a 15km radius. In addition, several placer-gold bearing creeks that have been historically mined include the active operations of Douglas Creek which has produced the



## DIRECTORS AND MANAGEMENT

### BOARD OF DIRECTORS

**Michael Iverson – CEO & Director**

**Yan Ducharme – President**

*P. Geo, M. Sc. – President and Director*

~~**Nick Luksha – Executive Vice President**~~

~~**Dr. Allen Alper – Director**~~

**Jacques Brunelle – Director** *Qualification – Director*

**Bradley Scharfe – Director** *Qualification – Director*

**Toby Lim – Director** *Qualification – Director*

**Jasmine Lau – CFO** *Qualification – Chief Financial Officer*

**Seema Sharma – Director of Lands Management**

*Qualification - Land Management*

### INVESTOR RELATIONS

Email: ~~[info@prospectridgeresources.com](mailto:info@prospectridgeresources.com)~~

T: ~~1-111-1111~~

*Could add % of main shareholder or  
Have a pie, update date*

SHARE STRUCTURE	CSE : PRR
SHARES ISSUED	51,709,772
OPTIONS	3,825,000
WARRANTS	9,528,543
DEBT	\$0
FULLY DILUTED	65,063,415

Share Capital Structure as of Nov 13, 2021



**Same as the other side**

CONTACT: [info@prospectridgeresources.com](mailto:info@prospectridgeresources.com) | 1-111-1111